

## GAPDH antibody

Catalog No: #23000



Package Size: #23000 100ul

Orders: [order@signalwayantibody.com](mailto:order@signalwayantibody.com)Support: [tech@signalwayantibody.com](mailto:tech@signalwayantibody.com)

## Description

Product Name	GAPDH antibody
Host Species	Rabbit
Clonality	Polyclonal
Purification	Purified by antigen-affinity chromatography.
Applications	WB IHC IF
Species Reactivity	Hu
Immunogen Type	Peptide
Immunogen Description	Synthetic peptide contain a sequence corresponding to a region within amino acids 84 and 145 of GAPDH
Target Name	GAPDH
Accession No.	NCBI Gene ID: 2597NCBI mRNA#: NM_002046NCBI Protein#: NP_002037
Concentration	1mg/ml
Formulation	Supplied in 1XPBS, 1%BSA, 20% Glycerol (pH7.0). 0.01% Thimerosal was added as a preservative.
Storage	Store at -20°C for long term preservation (recommended). Store at 4°C for short term use.

## Application Details

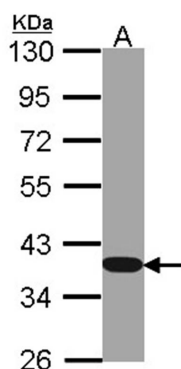
Predicted MW: 36kd

Western blotting: 1:500-1:3000

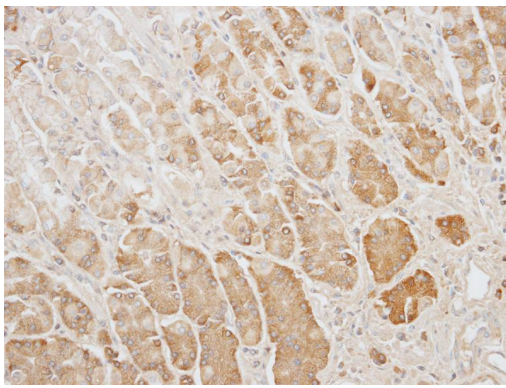
Immunohistochemistry: 1:100-1:250

Immunofluorescence: 1:100-1:200

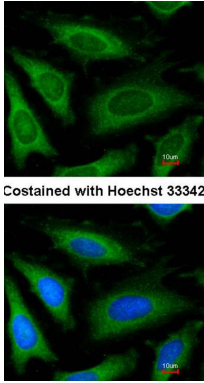
## Images



Sample (30 ug of whole cell lysate)  
 A: Hep G2  
 10% SDS PAGE  
 GAPDH antibody diluted at 1: 1000



Immunohistochemical analysis of paraffin-embedded Gastric CA, using GAPDH antibody at 1: 100 dilution.



Costained with Hoechst 33342

Immunofluorescence analysis of methanol-fixed HeLa, using GAPDH antibody at 1: 100 dilution.

## Background

The product of this gene catalyzes an important energy-yielding step in carbohydrate metabolism, the reversible oxidative phosphorylation of glyceraldehyde-3-phosphate in the presence of inorganic phosphate and nicotinamide adenine dinucleotide (NAD). The enzyme exists as a tetramer of identical chains. Many pseudogenes similar to this locus are present in the human genome. [provided by RefSeq]

Note: This product is for in vitro research use only and is not intended for use in humans or animals.