

## NCS-1 antibody

Catalog No: #23119



Package Size: #23119 100ul

Orders: order@signalwayantibody.com

Support: tech@signalwayantibody.com

## Description

Product Name	NCS-1 antibody
Host Species	Rabbit
Clonality	Polyclonal
Purification	Purified by antigen-affinity chromatography.
Applications	WB IF
Species Reactivity	Hu
Immunogen Type	Recombinant protein
Immunogen Description	Recombinant protein fragment contain a sequence corresponding to a region within amino acids 1 and 148 of NCS-1
Target Name	NCS-1
Other Names	FLUP; NCS1; NCS-1; DKFZp761L1223
Accession No.	NCBI Gene ID: 23413NCBI mRNA#: NM_014286NCBI Protein#: NP_055101
Concentration	0.4mg/ml
Formulation	Supplied in 0.1M Tris-buffered saline with 10% Glycerol (pH7.0). 0.01% Thimerosal was added as a preservative.
Storage	Store at -20°C for long term preservation (recommended). Store at 4°C for short term use.

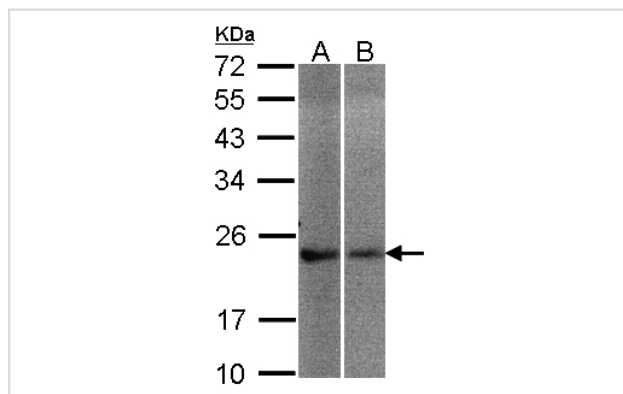
## Application Details

Predicted MW: 22kd

Western blotting: 1:100-1:1000

Immunofluorescence: 1:100-1:200

## Images



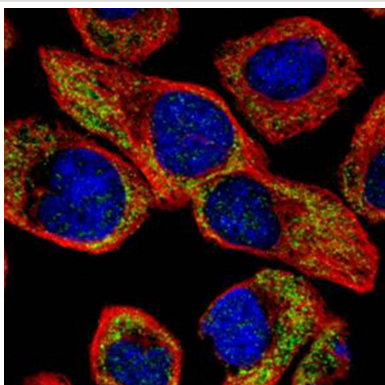
Sample(30 ug of whole cell lysate)

A: A431

B: Hep G2

12% SDS PAGE

Primary antibody diluted at 1: 200



Confocal immunofluorescence analysis (Olympus FV10i) of methanol-fixed A431, using NCS1 antibody (Green) at 1: 100 dilution and alpha-tubulin antibody (Red) at 1: 500.

## Background

This gene is a member of the neuronal calcium sensor gene family, which encode calcium-binding proteins expressed predominantly in neurons. The protein encoded by this gene regulates G protein-coupled receptor phosphorylation in a calcium-dependent manner and can substitute for calmodulin. The protein is associated with secretory granules and modulates synaptic transmission and synaptic plasticity. Multiple transcript variants encoding different isoforms have been found for this gene. [provided by RefSeq]

Note: This product is for in vitro research use only and is not intended for use in humans or animals.