

## Bcl-xL Antibody

Catalog No: #24247

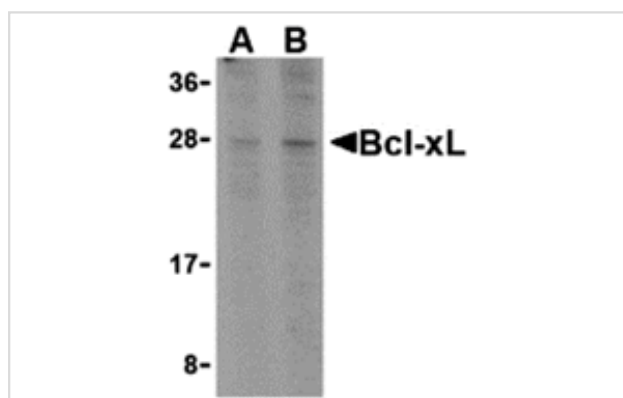
Package Size: #24247 100ul

Orders: [order@signalwayantibody.com](mailto:order@signalwayantibody.com)Support: [tech@signalwayantibody.com](mailto:tech@signalwayantibody.com)

## Description

Product Name	Bcl-xL Antibody
Host Species	Rabbit
Clonality	Polyclonal
Purification	Ion exchange chromatography purified
Applications	ELISA WB
Species Reactivity	Hu
Immunogen Type	Peptide
Immunogen Description	Raised against a peptide corresponding to 14 amino acids near the carboxy terminus of human Bcl-xL.
Target Name	Bcl-xL
Accession No.	CAA80661
Concentration	1mg/ml
Formulation	Supplied in PBS containing 0.02% sodium azide.
Storage	Can be stored at -20°C, stable for one year. As with all antibodies care should be taken to avoid repeated freeze thaw cycles. Antibodies should not be exposed to prolonged high temperatures.

## Images



Western blot analysis of Bcl-xL in A549 cell lysates with Bcl-xL antibody at (A) 1 and (B) 2 ug/mL.

## Background

Apoptosis plays a major role in normal organism development, tissue homeostasis, and removal of damaged cells. Disruption of this process has been implicated in a variety of diseases such as cancer. Bcl-xL is a member of the Bcl-2 family of proteins that are critical regulators of apoptosis. These can be divided into two classes: those that inhibit apoptosis and those that promote cell death. Bcl-xL is an anti-apoptotic mitochondrial protein related to Bcl-w and the major transcript of the bcl-x gene. Its high expression in tumors is correlated with advanced disease and poor prognosis. Bcl-xL expression level increases in response to several stimuli such as ionizing radiation and treatment with chemotherapeutic agents.

## Published Papers

et al., BAD overexpression inhibits cell growth and induces apoptosis via mitochondrial-dependent pathway in non-small cell lung cancer. In Cancer

---

Note: This product is for in vitro research use only and is not intended for use in humans or animals.