

ORAI1 Antibody

Catalog No: #24555

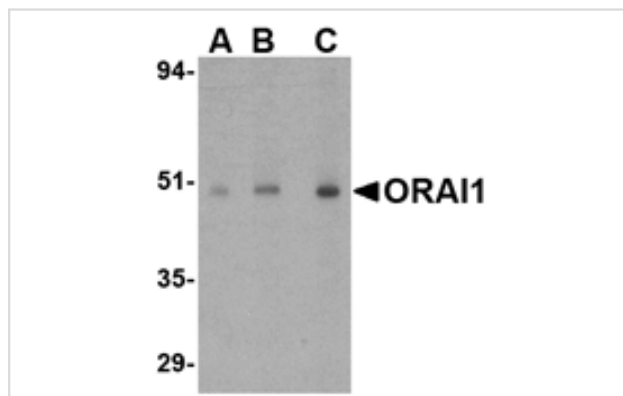
Package Size: #24555 100ul

Orders: order@signalwayantibody.comSupport: tech@signalwayantibody.com

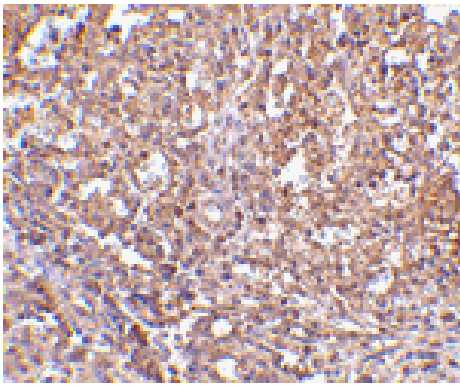
Description

Product Name	ORAI1 Antibody
Host Species	Rabbit
Clonality	Polyclonal
Purification	Affinity chromatography purified via peptide column
Applications	ELISA WB IHC
Species Reactivity	Human;Mouse
Specificity	This antibody is predicted to have no cross-reactivity to ORAI2 or ORAI3.
Immunogen Type	Peptide
Immunogen Description	Raised against a 16 amino acid peptide from near the carboxy terminus of human ORAI1.
Conjugates	Unconjugated
Target Name	ORAI1
Other Names	Transmembrane protein 142A, TMEM142A, Calcium release-activated calcium channel protein 1
Accession No.	Q96D31
Concentration	1mg/ml
Formulation	Supplied in PBS containing 0.02% sodium azide.
Storage	Can be stored at -20°C, stable for one year. As with all antibodies care should be taken to avoid repeated freeze thaw cycles. Antibodies should not be exposed to prolonged high temperatures.

Images



Western blot analysis of ORAI1 in human ovary tissue lysate with ORAI1 antibody at (A) 0.5, (B) 1 and (C) 2 ug/mL.



Immunohistochemistry of ORAI1 in human spleen tissue with ORAI1 antibody at 2.5 ug/mL.

Background

Antigen stimulation of immune cells triggers Ca^{++} entry through Ca^{++} release-activated Ca^{++} (CRAC) channels. ORAI1 is a recently identified four-transmembrane spanning protein that is an essential component of CRAC. A missense mutation in this protein in humans is the cause of one form of hereditary severe combined immune deficiency (SCID) which results in ablated T-cell Ca^{++} entry. It has been suggested that ORAI1 functions as a highly selective Ca^{++} plasma membrane channel that is gated through interactions with STIM1, the store-activated endoplasmic reticulum Ca^{++} sensor.

Note: This product is for in vitro research use only and is not intended for use in humans or animals.