

STEAP1 Antibody

Catalog No: #24565

Package Size: #24565 100ul



Orders: order@signalwayantibody.com
Support: tech@signalwayantibody.com

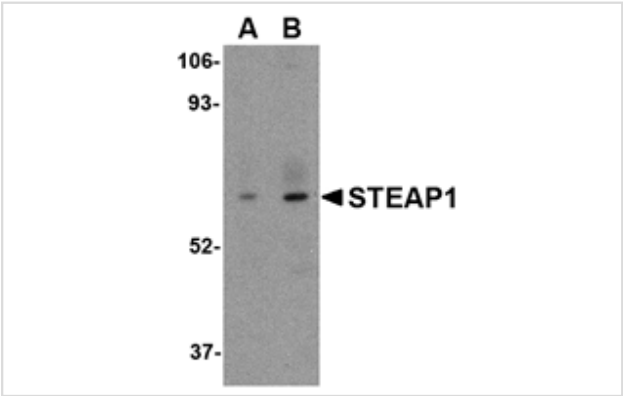
Description

Product Name	STEAP1 Antibody
Host Species	Rabbit
Clonality	Polyclonal
Isotype	IgG
Purification	The antibody was affinity-purified from rabbit antiserum by affinity-chromatography using epitope-specific immunogen.
Applications	WB;IHC;IF;ELISA
Species Reactivity	Human;Mouse
Specificity	This STEAP1 antibody does not cross-react with other STEAP proteins.
Immunogen Description	The antiserum was produced against synthesized peptide derived from human STEAP1.
Conjugates	Unconjugated
Target Name	STEAP1
Other Names	STEAP1 ; PRSS24 ; STEAP ; Metalloreductase STEAP1 ; Six-transmembrane epithelial antigen of prostate 1
Accession No.	Q9UHE8
Calculated MW	40 kDa
Concentration	1mg/ml
Formulation	Liquid in PBS containing 50% glycerol, 0.5% BSA and 0.02% sodium azide.
Storage	Store at -20°C/1 year

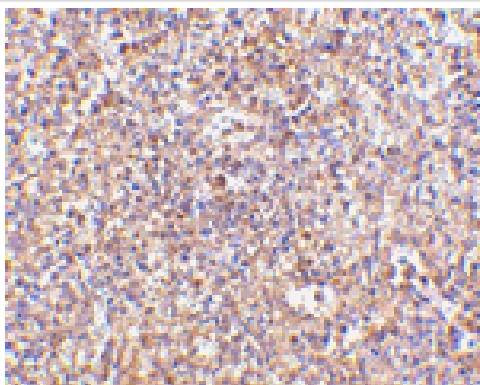
Application Details

WB 1:500-1:2000; IHC 1:100-1:300; ELISA 1:10000; IF 1:50-200

Images



Western blot analysis of STEAP1 in human spleen tissue lysate with STEAP1 antibody at (A) 1 and (B) 2 ug/mL.



Immunohistochemistry of STEAP1 in human spleen tissue with STEAP1 antibody at 2.5 ug/mL.

Background

The six-transmembrane epithelial antigen of prostate 1 (STEAP1) was the first member of a family of metalloredoxases identified as cell-surface antigens in prostate tissue. The normal function of STEAP is still uncertain; unlike other members of the STEAP family, STEAP1 does not promote iron or copper reduction or uptake and lacks the FNO-like reductase domain critical for activity. However, its expression is highly increased in multiple cancer cell lines, including prostate, bladder, colon, and ovarian cancers. Supporting this is evidence that STEAP1 peptides can be used to stimulate CD8+ T cells from healthy donors, enabling them to recognize STEAP1-positive human tumor cells, suggesting that STEAP1 may be a potential target for cancer immunotherapy. At least three isoforms of STEAP1 are known to exist.

Published Papers

Li et al., Prognostic Significance of Iron Metabolism Related Genes in Human Lung Adenocarcinoma. *Cancer Management and Research*. 2023 Feb 22;13(1):1-11. PMID: 36860893, (2023)

[PMID:36860893](#)

Note: This product is for in vitro research use only and is not intended for use in humans or animals.