

Alpha-tubulin Antibody

Catalog No: #24864

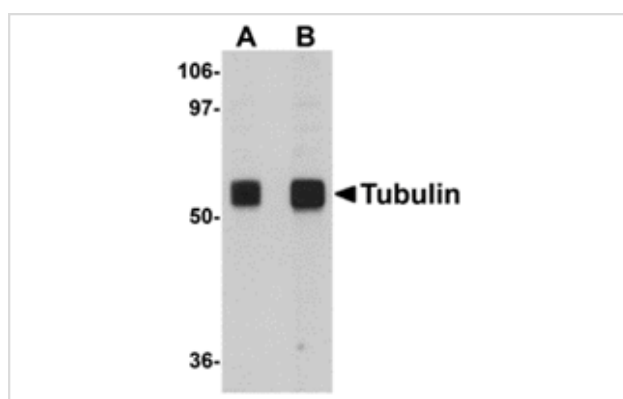
Package Size: #24864 100ul

Orders: order@signalwayantibody.comSupport: tech@signalwayantibody.com

Description

| | |
|-----------------------|---|
| Product Name | Alpha-tubulin Antibody |
| Host Species | Chicken |
| Clonality | Polyclonal |
| Purification | Affinity chromatography purified via peptide column |
| Applications | ELISA WB |
| Species Reactivity | Human;Mouse;Rat |
| Immunogen Type | Peptide |
| Immunogen Description | Raised against a 16 amino acid peptide near the amino terminus of human Tubulin. |
| Conjugates | Unconjugated |
| Target Name | Alpha-tubulin |
| Other Names | Alpha-tubulin, Tubulin alpha-1A, TUBA1A, TUBA3, LIS3 |
| Accession No. | CAA25855 |
| Concentration | 1mg/ml |
| Formulation | Supplied in PBS containing 0.02% sodium azide. |
| Storage | Can be stored at -20°C, stable for one year. As with all antibodies care should be taken to avoid repeated freeze thaw cycles. Antibodies should not be exposed to prolonged high temperatures. |

Images



Western blot analysis of Tubulin in rat brain tissue lysate with Tubulin antibody at (A) 0.5 and (B) 1 ug/mL.

Background

Alpha-tubulin belongs to the tubulin superfamily, which is composed of six distinct families. Along with beta-tubulins, alpha-tubulins are the major components of microtubules. These microtubules are involved in a wide variety of cellular activities ranging from mitosis and transport events to cell movement and the maintenance of cell shape. Alpha- and beta-tubulin dimers are assembled to 13 protofilaments that form a microtubule of 22-nm diameter. Tyrosine ligase adds a C-terminal tyrosine to monomeric alpha-tubulin. Assembled microtubules can again be detyrosinated by a cytoskeleton-associated carboxypeptidase. Another post-translational modification of detyrosinated alpha-tubulin is C-terminal polyglutamylation, which is characteristic of microtubules in neuronal cells and the mitotic spindle. Like GAPDH and beta-Actin, this antibody makes an excellent loading control in immunoblots.

Note: This product is for in vitro research use only and is not intended for use in humans or animals.