

# Transthyretin Antibody

Catalog No: #24890

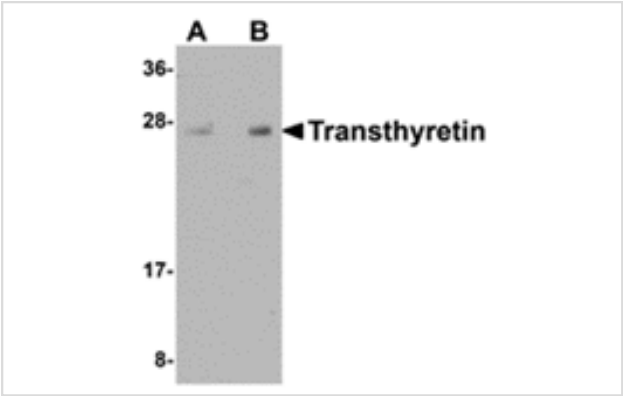
Package Size: #24890 100ul

Orders: [order@signalwayantibody.com](mailto:order@signalwayantibody.com)  
Support: [tech@signalwayantibody.com](mailto:tech@signalwayantibody.com)

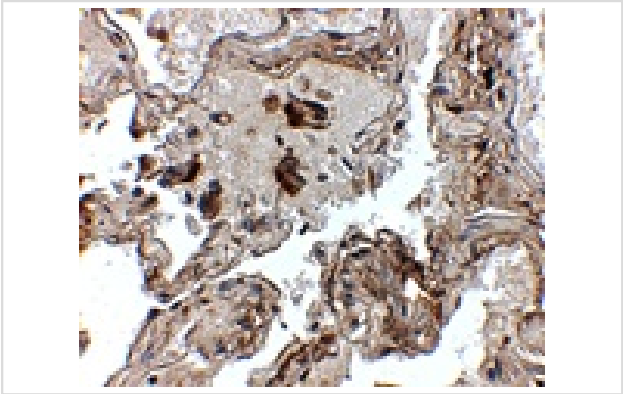
## Description

Product Name	Transthyretin Antibody
Host Species	Chicken
Clonality	Polyclonal
Purification	Affinity chromatography purified via peptide column
Applications	ELISA WB IHC
Species Reactivity	Human;Mouse;Rat
Immunogen Type	Peptide
Immunogen Description	Raised against a 17 amino acid peptide near the center of human Transthyretin.
Conjugates	Unconjugated
Target Name	Transthyretin
Other Names	Transthyretin, TTR, PALB, TBPA, HsT2651
Accession No.	P02766
Concentration	1mg/ml
Formulation	Supplied in PBS containing 0.02% sodium azide.
Storage	Can be stored at -20°C, stable for one year. As with all antibodies care should be taken to avoid repeated freeze thaw cycles. Antibodies should not be exposed to prolonged high temperatures.

## Images



Western blot analysis of Transthyretin in human lung tissue lysate with Transthyretin antibody at (A) 1 and (B) 2 ug/mL.



Immunohistochemistry of Transthyretin in human lung tissue with Transthyretin antibody at 2.5 ug/mL.

## Background

Transthyretin is a tetrameric carrier protein that transports thyroid hormones in the plasma and cerebrospinal fluid, and retinol (vitamin A) in the plasma. More than 80 different mutations in this gene have been reported; most mutations are related to amyloid deposition, affecting predominantly peripheral nerve and/or the heart. The diseases caused by mutations include familial amyloidotic polyneuropathy, euthyroid hyperthyroxinemia, amyloidotic vitreous opacities, cardiomyopathy, oculoleptomeningeal amyloidosis, meningocerebrovascular amyloidosis, and carpal tunnel syndrome. It has also been suggested that Transthyretin plays an important role in the maintenance of normal cognitive processes during aging, neuropeptide processing and nerve regeneration. It has also been linked to several pathological conditions including Parkinson's disease, schizophrenia, and depression.

Note: This product is for in vitro research use only and is not intended for use in humans or animals.