

EMX2 Antibody

Catalog No: #25444

Package Size: #25444 100ul

Orders: order@signalwayantibody.comSupport: tech@signalwayantibody.com

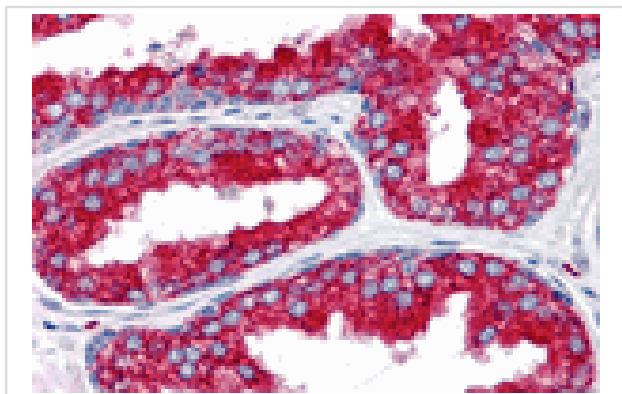
Description

Product Name	EMX2 Antibody
Host Species	Rabbit
Clonality	Polyclonal
Purification	Affinity chromatography purified via peptide column
Applications	ELISA IHC
Species Reactivity	Hu
Specificity	At least two isoforms of EMX2 are known to exist; this antibody will detect both isoforms. EMX2 antibody is predicted to not cross-react with EMX1.
Immunogen Type	Peptide
Immunogen Description	16 amino acid peptide near the amino terminus of human EMX2.
Target Name	EMX2
Other Names	Empty spiracles homolog 2, EMX-2, Empty spiracles-like protein 2
Accession No.	Q04743
Concentration	1mg/ml
Formulation	PBS containing 0.02% sodium azide.
Storage	Store at 4°C for three months and -20°C, stable for up to one year.

Application Details

Predicted MW: 28kd

Images



Immunohistochemistry of EMX2 in human prostate tissue with EMX2 antibody at 5 ug/ml.

Note: This product is for in vitro research use only and is not intended for use in humans or animals.