

Apaf-1 Monoclonal Antibody

Catalog No: #26002

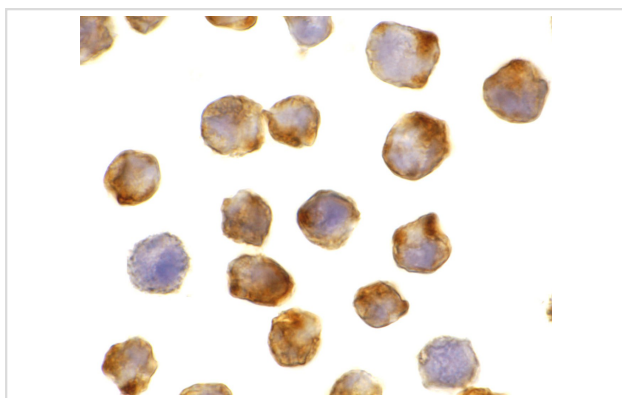
Package Size: #26002 100ul

Orders: order@signalwayantibody.comSupport: tech@signalwayantibody.com

Description

Product Name	Apaf-1 Monoclonal Antibody
Host Species	Mouse
Clonality	Monoclonal
Clone No.	mAb (Clone 5E11)
Purification	Immunoaffinity chromatography purified IgG
Applications	ELISA IHC
Species Reactivity	Human;Mouse;Rat
Immunogen Type	Peptide
Immunogen Description	A peptide corresponding to amino acids near the carboxy terminus of human Apaf1.
Conjugates	Unconjugated
Target Name	Apaf-1
Other Names	Apaf-1 (5E11), Apoptotic protease activating factor 1
Accession No.	AAC51678
Concentration	1mg/ml
Formulation	Supplied in PBS containing 0.02% sodium azide.
Storage	Can be stored at -20°C, stable for one year.

Images



Immunohistochemistry of Apaf1 in K562 cells with Apaf1 antibody at 0.5 ug/ml.

Background

Apoptosis is related to many diseases and induced by a family of cell death receptors and their ligands. Cell death signals are transduced by death domain containing adapter molecules and members of the caspase family of proteases. The mammalian homologous of the key cell death gene CED-4 in *C. elegans* was identified recently from human and mouse and designated Apaf1 for apoptosis protease-activating factor 1. Apaf1 binds to cytochrome c (Apaf2) and caspase-9 (Apaf3), which leads to caspase-9 activation. Activated caspase-9 in turn cleaves and activates caspase-3 that is one of the key proteases, being responsible for the proteolytic cleavage of many key proteins in apoptosis. Apaf1 can also associate with caspase-4 and caspase-8. Apaf1 transcript is ubiquitously expressed in human tissues.

Note: This product is for in vitro research use only and is not intended for use in humans or animals.