

SCN8A Polyclonal Antibody

Catalog No: #27251



Package Size: #27251-1 50ul #27251-2 100ul

Orders: order@signalwayantibody.com
Support: tech@signalwayantibody.com

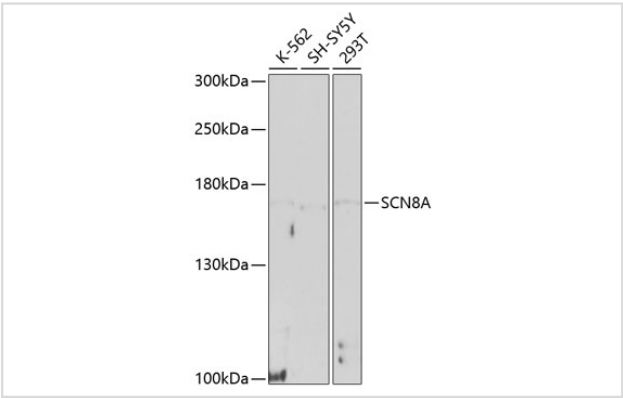
Description

Product Name	SCN8A Polyclonal Antibody
Host Species	Rabbit
Clonality	Polyclonal
Isotype	IgG
Purification	Affinity purification
Applications	WB
Species Reactivity	Human
Immunogen Description	Recombinant fusion protein of human SCN8A (NP_055006.1).
Conjugates	Unconjugated
Other Names	SCN8A; BFIS5; CERIII; CIAT; EIEE13; MED; NaCh6; Nav1.6; PN4; sodium channel protein type 8 subunit alpha
Accession No.	Swiss-Prot#:Q9UQD0NCBI Gene ID:6334
Calculated MW	165kDa
Formulation	Avoid freeze / thaw cycles. Buffer: PBS with 50% glycerol, pH7.4.
Storage	Store at -20°C

Application Details

WB 1:200 - 1:1000

Images



Western blot analysis of extracts of various cell lines, using SCN8A antibody.

Background

This gene encodes a member of the sodium channel alpha subunit gene family. The encoded protein forms the ion pore region of the voltage-gated sodium channel. This protein is essential for the rapid membrane depolarization that occurs during the formation of the action potential in excitable neurons. Mutations in this gene are associated with mental retardation, pancerebellar atrophy and ataxia. Alternate splicing results in multiple transcript variants.

Note: This product is for in vitro research use only and is not intended for use in humans or animals.