

PPP1R14A Polyclonal Antibody

Catalog No: #27314



Package Size: #27314-1 50ul #27314-2 100ul

Orders: order@signalwayantibody.comSupport: tech@signalwayantibody.com

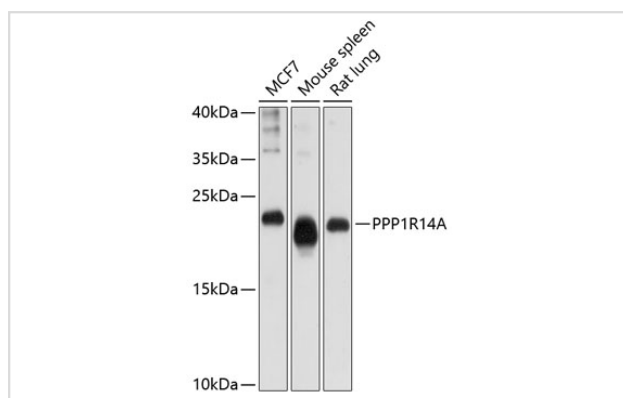
Description

Product Name	PPP1R14A Polyclonal Antibody
Host Species	Rabbit
Clonality	Polyclonal
Isotype	IgG
Purification	Affinity purification
Applications	WB
Species Reactivity	Human;Mouse;Rat
Immunogen Description	Recombinant fusion protein of human PPP1R14A (NP_150281.1).
Conjugates	Unconjugated
Other Names	PPP1R14A; CPI-17; CPI17; PPP1INL; protein phosphatase 1 regulatory subunit 14A
Accession No.	Swiss-Prot#:Q96A00NCBI Gene ID:94274
Calculated MW	17kDa
Formulation	Avoid freeze / thaw cycles. Buffer: PBS with 50% glycerol, pH7.4.
Storage	Store at -20°C

Application Details

WB □ 1:500 - 1:2000

Images



Western blot analysis of extracts of various cell lines, using PPP1R14A antibody.

Background

The protein encoded by this gene belongs to the protein phosphatase 1 (PP1) inhibitor family. This protein is an inhibitor of smooth muscle myosin phosphatase, and has higher inhibitory activity when phosphorylated. Inhibition of myosin phosphatase leads to increased myosin phosphorylation and enhanced smooth muscle contraction. Alternatively spliced transcript variants encoding different isoforms have been noted for this gene.

Note: This product is for in vitro research use only and is not intended for use in humans or animals.