

TUBB8 Polyclonal Antibody

Catalog No: #27733



Package Size: #27733-1 50ul #27733-2 100ul

Orders: order@signalwayantibody.com
Support: tech@signalwayantibody.com

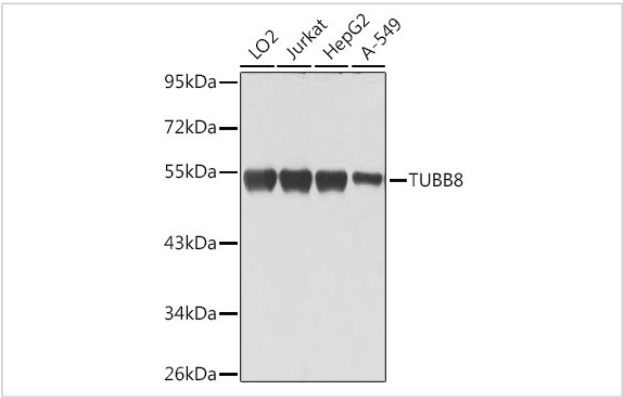
Description

Product Name	TUBB8 Polyclonal Antibody
Host Species	Rabbit
Clonality	Polyclonal
Isotype	IgG
Purification	Affinity purification
Applications	WB,IF
Species Reactivity	Human
Immunogen Description	A synthetic peptide of human TUBB8
Conjugates	Unconjugated
Other Names	TUBB8;OOMD;OOMD2;bA631M21.2
Accession No.	Uniprot:Q3ZCM7GeneID:347688
Calculated MW	54kDa
SDS-PAGE MW	55kDa
Formulation	PBS with 0.02% sodium azide,50% glycerol,pH7.3.
Storage	Store at -20°C. Avoid freeze / thaw cycles.

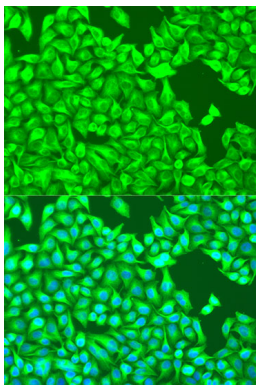
Application Details

WB 1:500 - 1:2000IF 1:50 - 1:200

Images



Western blot analysis of extracts of various cell lines, using TUBB8 antibody.



Immunofluorescence analysis of U2OS cells using TUBB8 antibody.

Background

The protein encoded by this gene represents the primary beta-tubulin subunit of oocytes and the early embryo. Defects in this gene, which is primate-specific, are a cause of oocyte maturation defect 2 and infertility.

Published Papers

Tao Danping, Wu Wenting, Zheng Zerong, Zhang Hui, Ji Yue, Zhuang Yiyi, Wang Huizhen, Peng Fenfen, Chen Xiaowen, Long Haibo, Luo Congwei et al., siL-11 exacerbates cisplatin-induced acute kidney injury by facilitating apoptosis in renal tubular epithelial cells via ERK1/2-Drp1/TFEB-mediated defective autophagy, Cellular signalling, (2025)

[PMID:41115562](#)

Note: This product is for in vitro research use only and is not intended for use in humans or animals.