

SLA2 Polyclonal Antibody

Catalog No: #27794



Package Size: #27794-1 50ul #27794-2 100ul

Orders: order@signalwayantibody.com
Support: tech@signalwayantibody.com

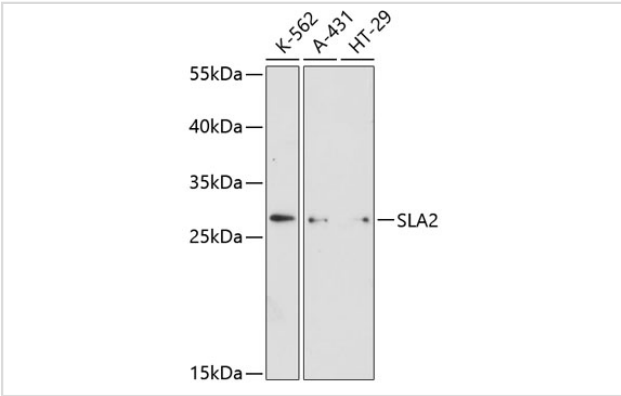
Description

Product Name	SLA2 Polyclonal Antibody
Host Species	Rabbit
Clonality	Polyclonal
Isotype	IgG
Purification	Affinity purification
Applications	WB
Species Reactivity	Hu
Immunogen Description	Recombinant fusion protein of human SLA2 (NP_115590.1).
Other Names	SLA2; C20orf156; MARS; SLAP-2; SLAP2; src-like-adapter 2
Accession No.	Swiss-Prot#:Q9H6Q3NCBI Gene ID:84174
Calculated MW	28kDa
Formulation	Avoid freeze / thaw cycles. Buffer: PBS with 50% glycerol, pH7.4.
Storage	Store at -20°C

Application Details

WB 1:500 - 1:2000

Images



Western blot analysis of extracts of various cell lines, using SLA2 antibody.

Background

This gene encodes a member of the SLAP family of adapter proteins. The encoded protein may play an important receptor-proximal role in downregulating T and B cell-mediated responses and inhibits antigen receptor-induced calcium mobilization. This protein interacts with Cas-Br-M (murine) ecotropic retroviral transforming sequence c. Two transcript variants encoding distinct isoforms have been identified for this gene.

Published Papers

et al., HBx Mediated Increase of DDX17 Contributes to HBV-Related Hepatocellular Carcinoma Tumorigenesis. In Front Immunol on 2022 Jun 16 by Mei-Ling Dong, Xu Wen, et al.. PMID:35784274, (2022)

[PMID:35784274](#)

Note: This product is for in vitro research use only and is not intended for use in humans or animals.