

# IL17RE Polyclonal Antibody

Catalog No: #28500

Package Size: #28500-1 50ul #28500-2 100ul

Orders: [order@signalwayantibody.com](mailto:order@signalwayantibody.com)Support: [tech@signalwayantibody.com](mailto:tech@signalwayantibody.com)

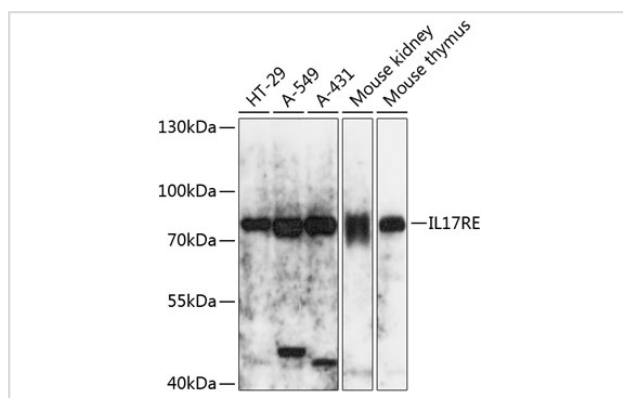
## Description

Product Name	IL17RE Polyclonal Antibody
Host Species	Rabbit
Clonality	Polyclonal
Isotype	IgG
Purification	Affinity purification
Applications	WB
Species Reactivity	Human;Mouse
Immunogen Description	Recombinant fusion protein of human IL17RE (NP_705613.1).
Conjugates	Unconjugated
Other Names	IL17RE; interleukin-17 receptor E
Accession No.	Swiss-Prot#:Q8NFR9NCBI Gene ID:132014
Calculated MW	75kDa
Formulation	Avoid freeze / thaw cycles. Buffer: PBS with 50% glycerol, pH7.4.
Storage	Store at -20°C

## Application Details

WB □ 1:500 - 1:2000

## Images



Western blot analysis of extracts of various cell lines, using IL17RE antibody.

## Background

This gene encodes a transmembrane protein that functions as the receptor for interleukin-17C. The encoded protein signals to downstream components of the mitogen activated protein kinase (MAPK) pathway. Activity of this protein is important in the immune response to bacterial pathogens. Alternatively spliced transcript variants have been described for this gene.

---

Note: This product is for in vitro research use only and is not intended for use in humans or animals.