

SLC7A2 Polyclonal Antibody

Catalog No: #28626



Package Size: #28626-1 50ul #28626-2 100ul

Orders: order@signalwayantibody.com
Support: tech@signalwayantibody.com

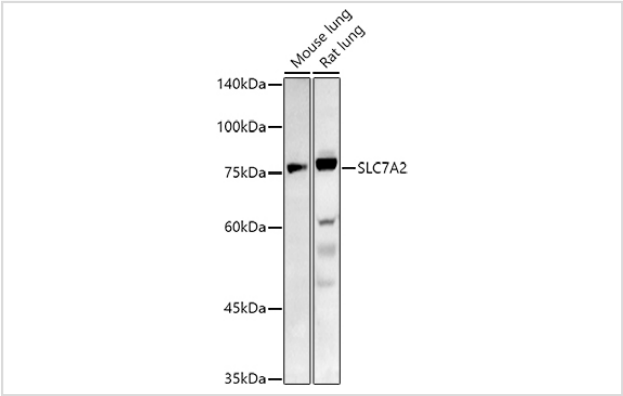
Description

Product Name	SLC7A2 Polyclonal Antibody
Host Species	Rabbit
Clonality	Polyclonal
Isotype	IgG
Purification	Affinity purification
Applications	WB,IHC
Species Reactivity	Human;Mouse;Rat
Immunogen Description	A synthetic peptide of human SLC7A2 (NP_001008539.3).
Conjugates	Unconjugated
Other Names	SLC7A2;ATRC2;CAT2;HCAT2
Accession No.	Uniprot:P52569GenelD:6542
Calculated MW	72kDa
SDS-PAGE MW	72KDa
Concentration	1.56 mg/ml
Formulation	PBS with 0.02% sodium azide,50% glycerol,pH7.3.
Storage	Store at -20°C. Avoid freeze / thaw cycles.

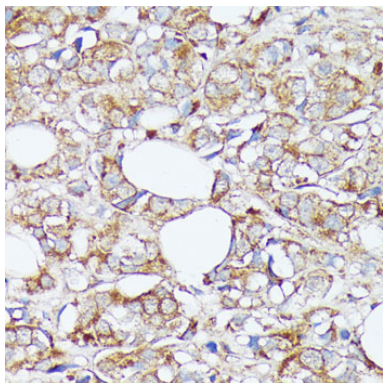
Application Details

WB 1:500 - 1:2000IHC 1:50 - 1:100

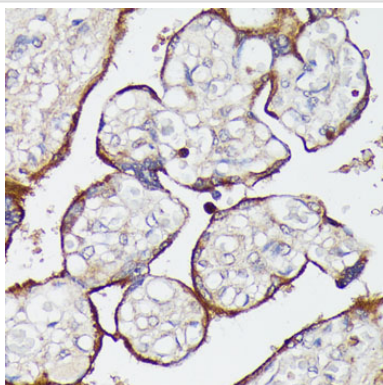
Images



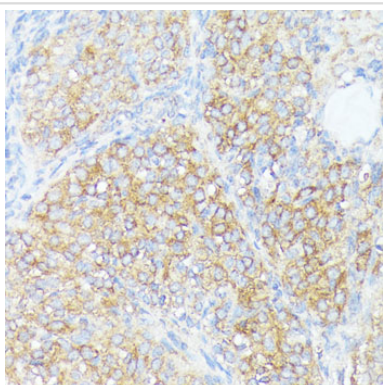
Western blot analysis of extracts of various cell lines, using SLC7A2 antibody.



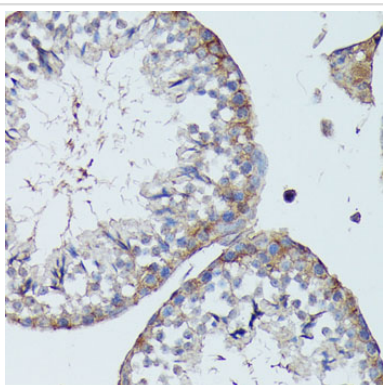
Immunohistochemistry of paraffin-embedded human mammary cancer using SLC7A2 antibody.



Immunohistochemistry of paraffin-embedded human placenta using SLC7A2 antibody.



Immunohistochemistry of paraffin-embedded rat ovary using SLC7A2 antibody.



Immunohistochemistry of paraffin-embedded mouse testis using SLC7A2 antibody.

Background

The protein encoded by this gene is a cationic amino acid transporter and a member of the APC (amino acid-polyamine-organocation) family of transporters. The encoded membrane protein is responsible for the cellular uptake of arginine, lysine and ornithine. Three transcript variants encoding different isoforms have been found for this gene.

Note: This product is for in vitro research use only and is not intended for use in humans or animals.