

## DISP1 Polyclonal Antibody

Catalog No: #28772

Package Size: #28772-1 50ul #28772-2 100ul

Orders: [order@signalwayantibody.com](mailto:order@signalwayantibody.com)Support: [tech@signalwayantibody.com](mailto:tech@signalwayantibody.com)

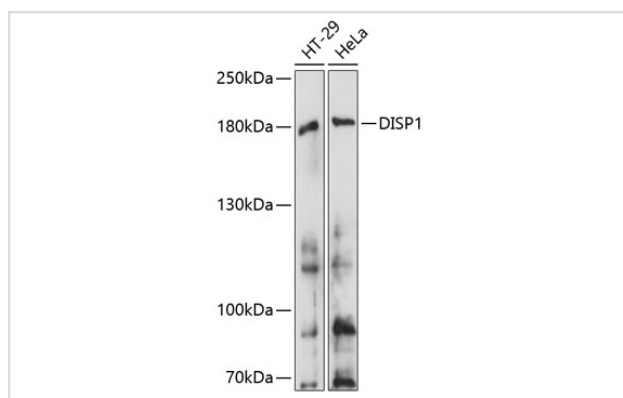
## Description

Product Name	DISP1 Polyclonal Antibody
Host Species	Rabbit
Clonality	Polyclonal
Isotype	IgG
Purification	Affinity purification
Applications	WB
Species Reactivity	Human
Immunogen Description	Recombinant fusion protein of human DISP1 (NP_116279.2).
Conjugates	Unconjugated
Other Names	DISP1; DISPA; protein dispatched homolog 1
Accession No.	Swiss-Prot#:Q96F81NCBI Gene ID:84976
Calculated MW	180kDa
Formulation	Avoid freeze / thaw cycles. Buffer: PBS with 50% glycerol, pH7.4.
Storage	Store at -20°C

## Application Details

WB □ 1:500 - 1:2000

## Images



Western blot analysis of extracts of various cell lines, using DISP1 antibody.

## Background

The pattern of cellular proliferation and differentiation that leads to normal development of embryonic structures often depends upon the localized production of secreted protein signals. Cells surrounding the source of a particular signal respond in a graded manner according to the effective concentration of the signal, and this response produces the pattern of cell types constituting the mature structure. A novel segment-polarity gene known as dispatched has been identified in *Drosophila* and its protein product is required for normal Hedgehog (Hh) signaling. This gene is one of two human homologs of *Drosophila* dispatched and, based on sequence identity to its mouse counterpart, the encoded protein may play an essential role in Hh patterning activities in the early embryo.

## Published Papers

---

Xiaoqi Xu et al., MAPK1 regulates platelet function and thrombus formation, Journal of Thrombosis and Haemostasis, (2025)

[PMID:40447106](#)

---

---

Note: This product is for in vitro research use only and is not intended for use in humans or animals.