

## L2HGDH Polyclonal Antibody

Catalog No: #28864

Package Size: #28864-1 50ul #28864-2 100ul

Orders: [order@signalwayantibody.com](mailto:order@signalwayantibody.com)Support: [tech@signalwayantibody.com](mailto:tech@signalwayantibody.com)

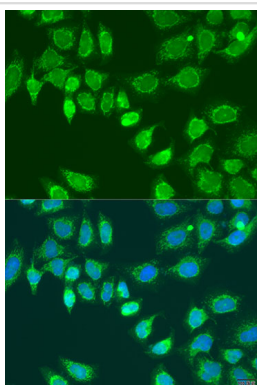
## Description

Product Name	L2HGDH Polyclonal Antibody
Host Species	Rabbit
Clonality	Polyclonal
Isotype	IgG
Purification	Affinity purification
Applications	WB,IF
Species Reactivity	Human;Mouse
Immunogen Description	Recombinant fusion protein of human L2HGDH (NP_079160.1).
Conjugates	Unconjugated
Other Names	L2HGDH; C14orf160; L2HGA; L-2-hydroxyglutarate dehydrogenase
Accession No.	Swiss-Prot#:Q9H9P8NCBI Gene ID:79944
Calculated MW	Refer to figures
Formulation	Avoid freeze / thaw cycles. Buffer: PBS with 50% glycerol, pH7.4.
Storage	Store at -20°C

## Application Details

WB 1:500 - 1:2000IF 1:50 - 1:200

## Images



Immunofluorescence analysis of U2OS cells using L2HGDH antibody.

## Background

This gene encodes L-2-hydroxyglutarate dehydrogenase, a FAD-dependent enzyme that oxidizes L-2-hydroxyglutarate to alpha-ketoglutarate in a variety of mammalian tissues. Mutations in this gene cause L-2-hydroxyglutaric aciduria, a rare autosomal recessive neurometabolic disorder resulting in moderate to severe mental retardation.

---

Note: This product is for in vitro research use only and is not intended for use in humans or animals.