

BRCA1 Polyclonal Antibody

Catalog No: #29085

Package Size: #29085-1 50ul #29085-2 100ul

Orders: order@signalwayantibody.comSupport: tech@signalwayantibody.com

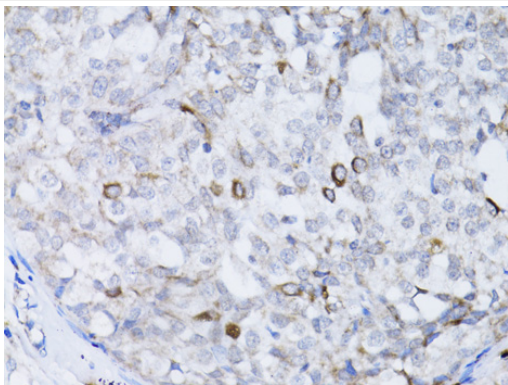
Description

Product Name	BRCA1 Polyclonal Antibody
Host Species	Rabbit
Clonality	Polyclonal
Isotype	IgG
Purification	Affinity purification
Applications	WB,IHC,IF
Species Reactivity	Human;Mouse;Rat
Immunogen Description	A synthetic peptide of human BRCA1
Conjugates	Unconjugated
Other Names	BRCA1;BRCAI;BRCC1;BROVCA1;FANCS;IRIS;PNCA4;PPP1R53;PSCP;RNF53
Accession No.	GeneID:672Swiss Prot:P38398
Calculated MW	7kDa/78-85kDa/202-210kDa
SDS-PAGE MW	300kDa
Concentration	1.0mg/ml
Formulation	Supplied at 1.0mg/mL in phosphate buffered saline (without Mg ²⁺ and Ca ²⁺), pH 7.4, 150mM NaCl, 0.02% sodium azide and 187% glycerol.
Storage	Store at -20°C. Avoid freeze / thaw cycles. Buffer: PBS with 0.02% sodium azide,50% glycerol,pH7.140.

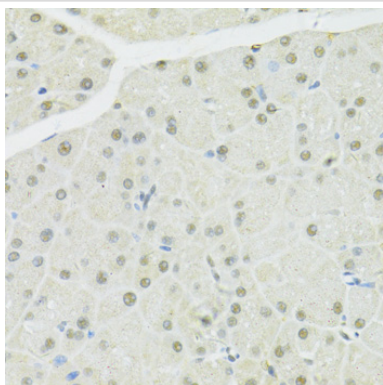
Application Details

WB□1:500 - 1:2000IHC□1:50 - 1:200IF□1:50 - 1:200

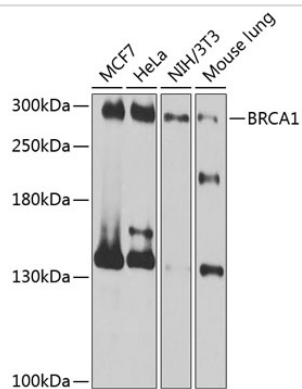
Images



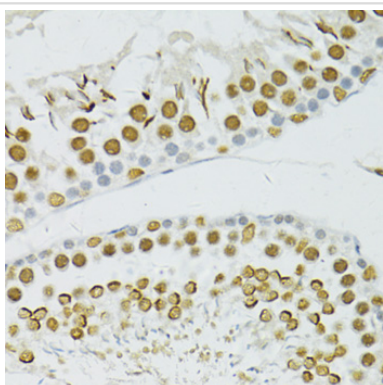
Immunohistochemistry of paraffin-embedded human breast cancer using BRCA1 antibody at dilution of 1:100 .



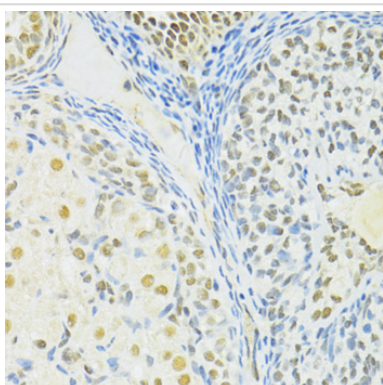
Immunohistochemistry of paraffin-embedded mouse pancreas using BRCA1 antibody at dilution of 1:100 .



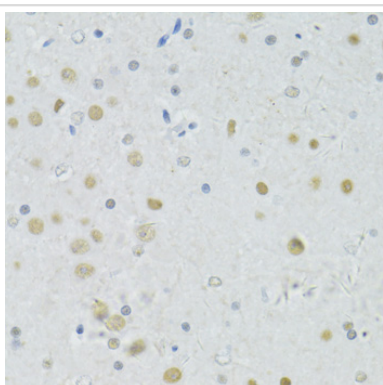
Western blot analysis of extracts of various cell lines, using BRCA1 antibody at 1:1000 dilution.



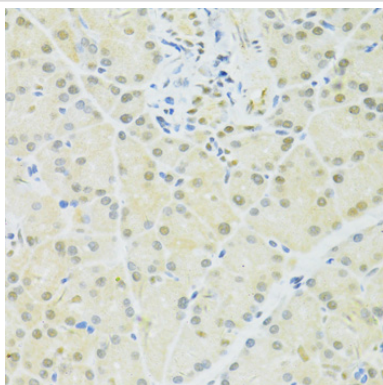
Immunohistochemistry of paraffin-embedded rat testis using BRCA1 antibody at dilution of 1:100 .



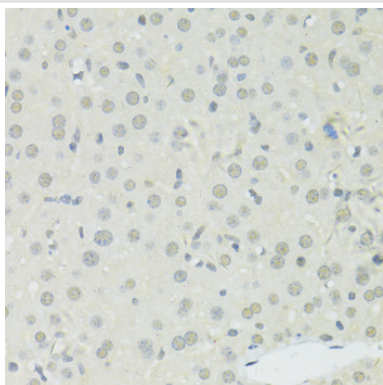
Immunohistochemistry of paraffin-embedded rat ovary using BRCA1 antibody at dilution of 1:100 .



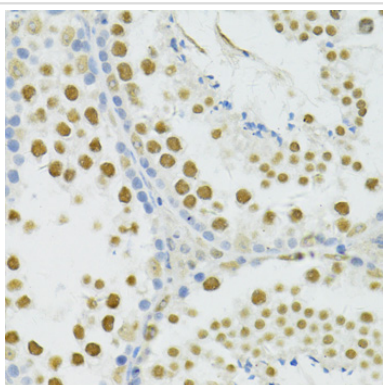
Immunohistochemistry of paraffin-embedded rat brain using BRCA1 antibody at dilution of 1:100 .



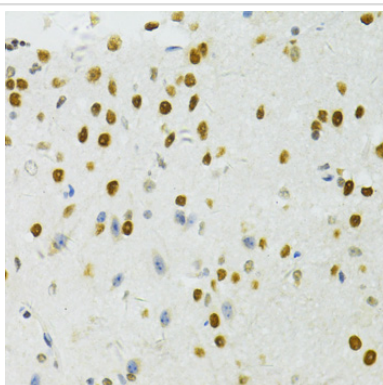
Immunohistochemistry of paraffin-embedded rat pancreas using BRCA1 antibody at dilution of 1:100 .



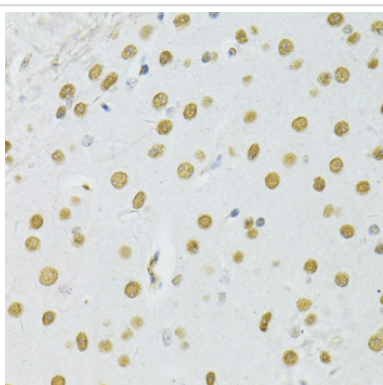
Immunohistochemistry of paraffin-embedded mouse liver using BRCA1 antibody at dilution of 1:100 .



Immunohistochemistry of paraffin-embedded mouse testis using BRCA1 antibody at dilution of 1:100 .



Immunohistochemistry of paraffin-embedded mouse spinal cord using BRCA1 antibody at dilution of 1:100 .



Immunohistochemistry of paraffin-embedded mouse brain using BRCA1 antibody at dilution of 1:100 .

Background

This gene encodes a nuclear phosphoprotein that plays a role in maintaining genomic stability, and it also acts as a tumor suppressor. The encoded protein combines with other tumor suppressors, DNA damage sensors, and signal transducers to form a large multi-subunit protein complex known as the BRCA1-associated genome surveillance complex (BASC). This gene product associates with RNA polymerase II, and through the C-terminal domain, also interacts with histone deacetylase complexes. This protein thus plays a role in transcription, DNA repair of double-stranded breaks, and recombination. Mutations in this gene are responsible for approximately 40% of inherited breast cancers and more than 80% of inherited breast and ovarian cancers. Alternative splicing plays a role in modulating the subcellular localization and physiological function of this gene. Many alternatively spliced transcript variants, some of which are disease-associated mutations, have been described for this gene, but the full-length nature of only some of these variants has been described. A related pseudogene, which is also located on chromosome 17, has been identified.

Note: This product is for in vitro research use only and is not intended for use in humans or animals.