

SLC10A1 Rabbit Polyclonal Antibody

Catalog No: #29569

Package Size: #29569-1 50ul #29569-2 100ul

Orders: order@signalwayantibody.comSupport: tech@signalwayantibody.com

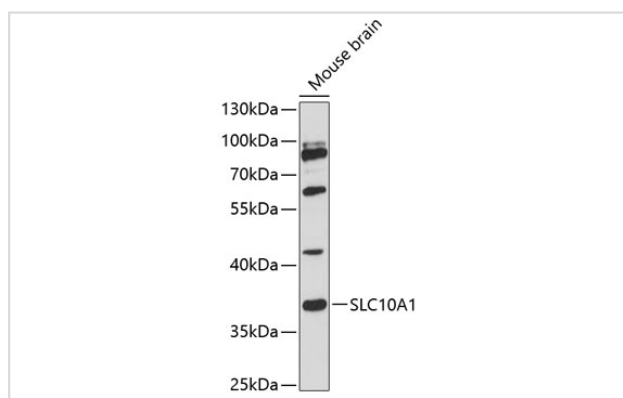
Description

Product Name	SLC10A1 Rabbit Polyclonal Antibody
Host Species	Rabbit
Clonality	Polyclonal
Isotype	IgG
Purification	Affinity purification
Applications	WB
Species Reactivity	Human;Mouse
Immunogen Description	A synthetic peptide of human SLC10A1 (NP_003040.1).
Conjugates	Unconjugated
Other Names	SLC10A1;NTCP
Accession No.	Uniprot:Q14973GenelD:6554
Calculated MW	38kDa
SDS-PAGE MW	38kDa
Formulation	PBS with 0.02% sodium azide,50% glycerol,pH7.3.
Storage	Store at -20°C. Avoid freeze / thaw cycles.

Application Details

WB 1:500 - 1:2000

Images



Western blot analysis of extracts of mouse brain, using SLC10A1 antibody.

Background

The protein encoded by this gene belongs to the sodium/bile acid cotransporter family, which are integral membrane glycoproteins that participate in the enterohepatic circulation of bile acids. Two homologous transporters are involved in the reabsorption of bile acids; the ileal sodium/bile acid cotransporter with an apical cell localization that absorbs bile acids from the intestinal lumen, bile duct and kidney, and the liver-specific sodium/bile acid cotransporter, represented by this protein, that is found in the basolateral membranes of hepatocytes. Bile acids are the catabolic product of

cholesterol metabolism, hence this protein is important for cholesterol homeostasis.

Published Papers

el at., PreS/2-21-Guided siRNA Nanoparticles Target to Inhibit Hepatitis B Virus Infection and Replication. In Front Immunol on 2022 Apr 29 by Lixia Gao, Jie Yang, et al.. PMID:35572586, , (2022)

[PMID:35572586](#)

Note: This product is for in vitro research use only and is not intended for use in humans or animals.