

Anti-His Tag Antibody(DM1), Rabbit mAb

Catalog No: #29617



Package Size: #29617-1 50ul #29617-2 100ul

Orders: order@signalwayantibody.com

Support: tech@signalwayantibody.com

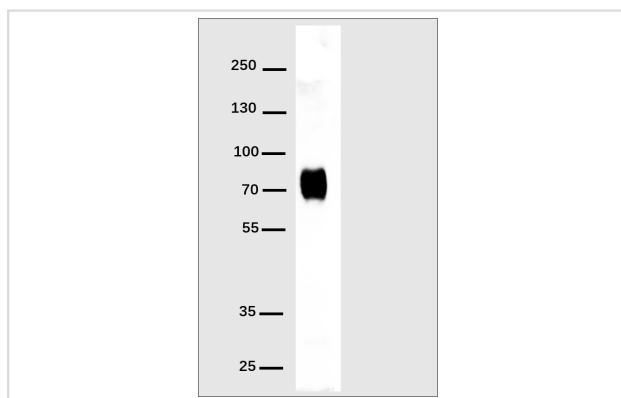
Description

Product Name	Anti-His Tag Antibody(DM1), Rabbit mAb
Host Species	Recombinant Rabbit
Clonality	Monoclonal
Isotype	Rabbit IgG
Purification	Affinity-chromatography
Applications	WB;IF/ICC;IP
Species Reactivity	His tags localized at the amino- or carboxyl?terminus.
Immunogen Type	Recombinant protein
Immunogen Description	Recombinant Protein of His tag
Conjugates	Unconjugated
Other Names	his tag
Calculated MW	Recombinant protein dependent
Formulation	Rabbit IgG in 10mM phosphate buffered saline , pH 7.4, 150mM sodium chloride, 0.05% BSA, 0.02% sodium azide and 50% glycerol.
Storage	Store at -20°C for 12 months (Avoid repeated freezing and thawing)

Application Details

WB 1:1000-1:10000; IF/ICC 1:100-1:500; IP 1:50-1:100

Images



Western blot analysis of his-tag fusion protein using His-Tag antibody at 1:1000 dilution. Secondary antibody: HRP Goat Anti-Rabbit IgG (H+L) at 1:5000 dilution. His-tag fusion protein : 70kDa, 20ng per lane. Blocking buffer: 5% nonfat dry milk in TBST. Exposure time: 1s.

Note: This product is for in vitro research use only and is not intended for use in humans or animals.