

ZCCHC3 Polyclonal Antibody

Catalog No: #30000



Package Size: #30000-1 50ul #30000-2 100ul

Orders: order@signalwayantibody.com
Support: tech@signalwayantibody.com

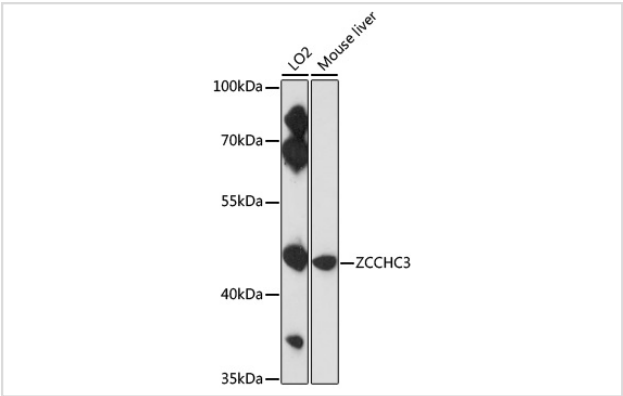
Description

Product Name	ZCCHC3 Polyclonal Antibody
Host Species	Rabbit
Clonality	Polyclonal
Isotype	IgG
Purification	Affinity purification
Applications	WB,IF
Species Reactivity	Human;Mouse
Immunogen Description	Recombinant fusion protein of human ZCCHC3 (NP_149080.2).
Conjugates	Unconjugated
Other Names	ZCCHC3; C20orf99; zinc finger CCHC-type containing 3
Accession No.	Swiss-Prot#:Q9NUD5NCBI Gene ID:85364
Calculated MW	43kDa
Formulation	Avoid freeze / thaw cycles. Buffer: PBS with 50% glycerol, pH7.4.
Storage	Store at -20°C

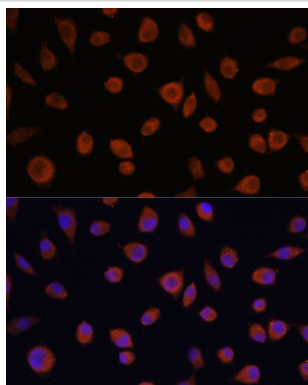
Application Details

WB 1:500 - 1:2000IF 1:50 - 1:200

Images



Western blot analysis of extracts of various cell lines, using ZCCHC3 antibody at 1:3000 dilution.



Immunofluorescence analysis of L929 cells using ZCCHC3 antibody at dilution of 1:100. Blue: DAPI for nuclear staining.

Background

Published Papers

el at., Host Zinc-finger CCHC-type containing protein 3 inhibits pseudorabies virus proliferation by regulating type I interferon signaling. In Gene on 2022 Jun 15 by Xiaoyong Chen, Tongling Shan, et al..PMID:35390445, , (2022)

[PMID:35390445](#)

el at., Proteomic analysis reveals zinc-finger CCHC-type containing protein 3 as a factor inhibiting virus infection by promoting innate signaling. In Virus Res on 2022 Oct 2 by Xiaoyong Chen, Ziwei Li, et al..PMID:35872280, , (2022)

[PMID:35872280](#)

Note: This product is for in vitro research use only and is not intended for use in humans or animals.