

TIMM44 Polyclonal Antibody

Catalog No: #30039



Package Size: #30039-1 50ul #30039-2 100ul

Orders: order@signalwayantibody.com
Support: tech@signalwayantibody.com

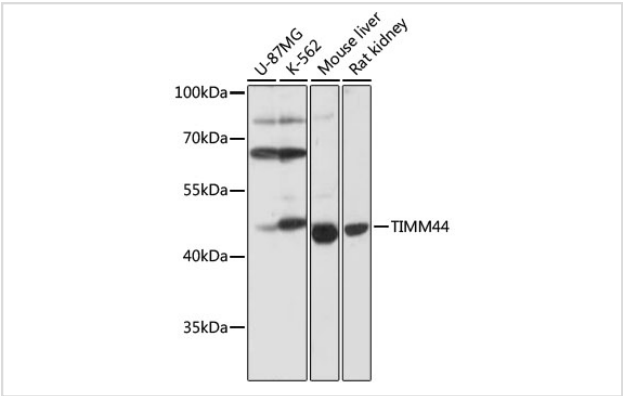
Description

| | |
|-----------------------|---|
| Product Name | TIMM44 Polyclonal Antibody |
| Host Species | Rabbit |
| Clonality | Polyclonal |
| Isotype | IgG |
| Purification | Affinity purification |
| Applications | WB,IF |
| Species Reactivity | Human;Mouse;Rat |
| Immunogen Description | Recombinant fusion protein of human TIMM44 (NP_006342.2). |
| Conjugates | Unconjugated |
| Other Names | TIM44 |
| Accession No. | Swiss-Prot#:O43615NCBI Gene ID:10469 |
| Calculated MW | 51kDa |
| Formulation | Avoid freeze / thaw cycles. Buffer: PBS with 50% glycerol, pH7.4. |
| Storage | Store at -20°C |

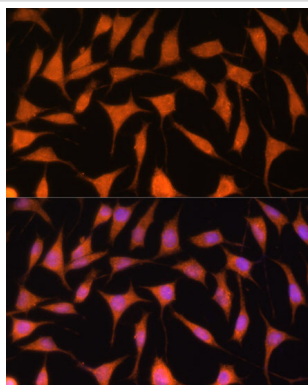
Application Details

WB 1:500 - 1:2000IF 1:50 - 1:200

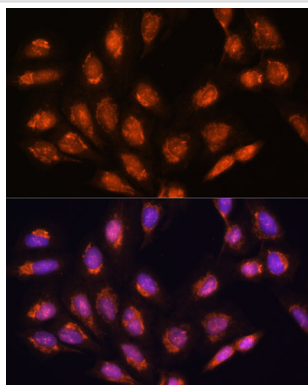
Images



Western blot analysis of extracts of various cell lines, using TIMM44 antibody at 1:1000 dilution.



Immunofluorescence analysis of L929 cells using TIMM44 antibody at dilution of 1:100. Blue: DAPI for nuclear staining.



Immunofluorescence analysis of U-2 OS cells using TIMM44 antibody at dilution of 1:100. Blue: DAPI for nuclear staining.

Background

This gene encodes a peripheral membrane protein associated with the mitochondrial inner membrane translocase, which functions in the import of proteins across the mitochondrial inner membrane and into the mitochondrial matrix. The encoded protein mediates binding of mitochondrial heat shock protein 70 to the translocase of inner mitochondrial membrane 23 (TIM23) complex. Expression of this gene is upregulated in kidney in a mouse model of diabetes. A mutation in this gene is associated with familial oncocyctic thyroid carcinoma.

Note: This product is for in vitro research use only and is not intended for use in humans or animals.