

SNTB1 Polyclonal Antibody

Catalog No: #30068



Package Size: #30068-1 50ul #30068-2 100ul

Orders: order@signalwayantibody.com
Support: tech@signalwayantibody.com

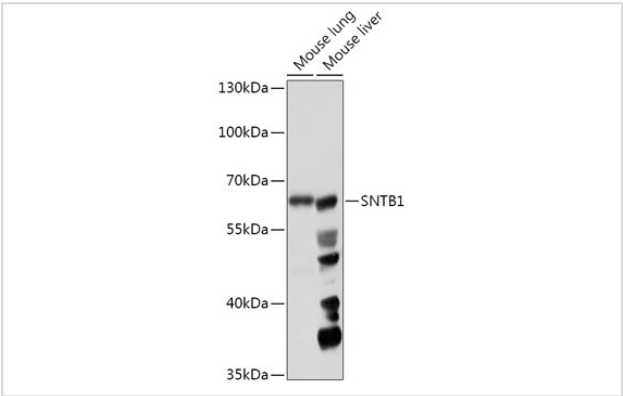
Description

Product Name	SNTB1 Polyclonal Antibody
Host Species	Rabbit
Clonality	Polyclonal
Isotype	IgG
Purification	Affinity purification
Applications	WB
Species Reactivity	Mouse
Immunogen Description	Recombinant fusion protein of human SNTB1 (NP_066301.1).
Conjugates	Unconjugated
Other Names	59-DAP, A1B, BSYN2, DAPA1B, SNT2, SNT2B1, TIP-43
Accession No.	Swiss-Prot#:Q13884NCBI Gene ID:6641
Calculated MW	58kDa
Formulation	Avoid freeze / thaw cycles. Buffer: PBS with 50% glycerol, pH7.4.
Storage	Store at -20°C

Application Details

WB 1:500 - 1:2000

Images



Western blot analysis of extracts of various cell lines, using SNTB1 antibody.

Background

Dystrophin is a large, rod-like cytoskeletal protein found at the inner surface of muscle fibers. Dystrophin is missing in Duchenne Muscular Dystrophy patients and is present in reduced amounts in Becker Muscular Dystrophy patients. The protein encoded by this gene is a peripheral membrane protein found associated with dystrophin and dystrophin-related proteins. This gene is a member of the syntrophin gene family, which contains at least two other structurally-related genes. [provided by RefSeq, Jul 2008]

Published Papers

Ren-Tao Zhang et al., Anticancer, Antiβ • Inflammatory, and Acute Toxicological Evaluation of the Novel Berberine Derivative BNβ • 7, Chemistry & Biodiversity, (2025)

[PMID:41417275](#)

Note: This product is for in vitro research use only and is not intended for use in humans or animals.