

CYSLTR1 Polyclonal Antibody

Catalog No: #30332

Package Size: #30332-1 50ul #30332-2 100ul

Orders: order@signalwayantibody.comSupport: tech@signalwayantibody.com

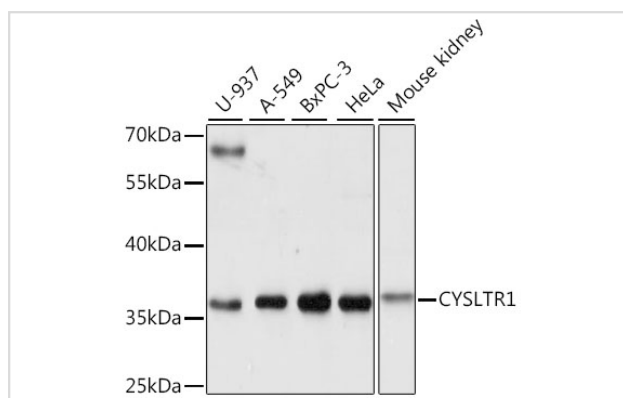
Description

Product Name	CYSLTR1 Polyclonal Antibody
Host Species	Rabbit
Clonality	Polyclonal
Isotype	IgG
Purification	Affinity purification
Applications	WB
Species Reactivity	Human;Mouse
Immunogen Description	A synthetic peptide of human CYSLTR1 (NP_006630.1).
Conjugates	Unconjugated
Other Names	CYSLTR1; CYSLT1; CYSLT1R; CYSLTR; HMTMF81; cysteinyl leukotriene receptor 1
Accession No.	Swiss-Prot#:Q9Y271NCBI Gene ID:10800
Calculated MW	38kDa
Formulation	Avoid freeze / thaw cycles. Buffer: PBS with 50% glycerol, pH7.4.
Storage	Store at -20°C

Application Details

WB □ 1:500 - 1:2000

Images



Western blot analysis of extracts of various cell lines, using CYSLTR1 antibody at 1:1000 dilution.

Background

This gene encodes a member of the G-protein coupled receptor 1 family. The encoded protein is a receptor for cysteinyl leukotrienes, and is involved in mediating bronchoconstriction via activation of a phosphatidylinositol-calcium second messenger system. Activation of the encoded receptor results in contraction and proliferation of bronchial smooth muscle cells, eosinophil migration, and damage to the mucus layer in the lung. Upregulation of this gene is associated with asthma and dysregulation may also be implicated in cancer. Alternative splicing results in multiple transcript variants.

Note: This product is for in vitro research use only and is not intended for use in humans or animals.