

GP2 Polyclonal Antibody

Catalog No: #30715



Package Size: #30715-1 50ul #30715-2 100ul

Orders: order@signalwayantibody.com
Support: tech@signalwayantibody.com

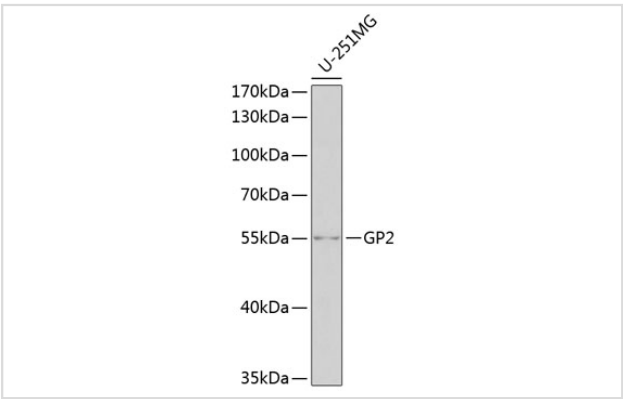
Description

Product Name	GP2 Polyclonal Antibody
Host Species	Rabbit
Clonality	Polyclonal
Isotype	IgG
Purification	Affinity purification
Applications	WB
Species Reactivity	Human
Immunogen Description	Recombinant fusion protein containing a sequence corresponding to amino acids 111-387 of human GP2 (NP_001007243.2).
Conjugates	Unconjugated
Other Names	GP2;ZAP75
Accession No.	Uniprot:P55259GeneID:2813
Calculated MW	55kDa
SDS-PAGE MW	55kDa
Formulation	PBS with 0.02% sodium azide,50% glycerol,pH7.3.
Storage	Store at -20°C. Avoid freeze / thaw cycles.

Application Details

WB 1:500 - 1:2000

Images



Western blot analysis of extracts of U-251MG cells, using GP2 antibody.

Background

This gene encodes an integral membrane protein that is secreted from intracellular zymogen granules and associates with the plasma membrane via glycosylphosphatidylinositol (GPI) linkage. The encoded protein binds pathogens such as enterobacteria, thereby playing an important role in the innate immune response. The C-terminus of this protein is related to the C-terminus of the protein encoded by the neighboring gene, uromodulin

(UMOD). Alternative splicing results in multiple transcript variants.

Published Papers

Han Jianting, Song Meina, Cheng Yijia, Gong Wei, Zhang Fei, Cao Qin et al., Structure of human glycoprotein 2 reveals mechanisms underlying filament formation and adaption to proteolytic environment in the digestive tract, PLoS biology, (2025)

[PMID:40550004](#)

Note: This product is for in vitro research use only and is not intended for use in humans or animals.