

WRB Polyclonal Antibody

Catalog No: #30787

Package Size: #30787-1 50ul #30787-2 100ul

Orders: order@signalwayantibody.comSupport: tech@signalwayantibody.com

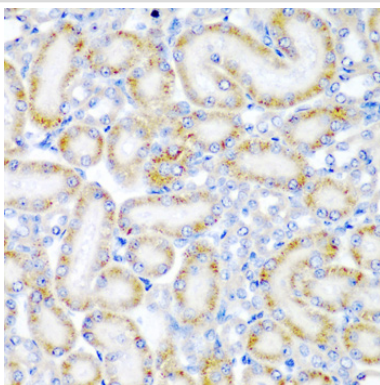
Description

Product Name	WRB Polyclonal Antibody
Host Species	Rabbit
Clonality	Polyclonal
Isotype	IgG
Purification	Affinity purification
Applications	WB,IHC
Species Reactivity	Mouse;Rat
Immunogen Description	Recombinant fusion protein of human WRB (NP_004618.2).
Conjugates	Unconjugated
Other Names	WRB; CHD5; GET1; tryptophan rich basic protein
Accession No.	Swiss-Prot#:O00258NCBI Gene ID:7485
Calculated MW	25kDa
Formulation	Avoid freeze / thaw cycles. Buffer: PBS with 50% glycerol, pH7.4.
Storage	Store at -20°C

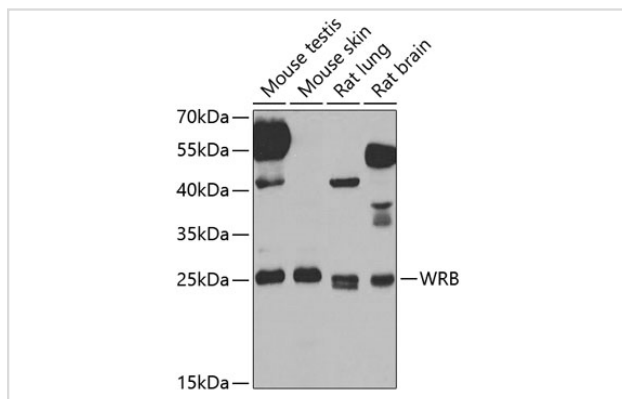
Application Details

WB□1:500 - 1:2000IHC□1:50 - 1:200

Images



Immunohistochemistry of paraffin-embedded rat kidney using WRB antibody at dilution of 1:200 (40x lens).



Western blot analysis of extracts of various cell lines, using WRB antibody at 1:1000 dilution.

Background

This gene encodes a basic nuclear protein of unknown function. The gene is widely expressed in adult and fetal tissues. Since the region proposed to contain the gene(s) for congenital heart disease (CHD) in Down syndrome (DS) patients has been restricted to 21q22.2-22.3, this gene, which maps to 21q22.3, has a potential role in the pathogenesis of Down syndrome congenital heart disease. Alternatively spliced transcript variants encoding different isoforms have been found for this gene.

Note: This product is for in vitro research use only and is not intended for use in humans or animals.