

LDHB Polyclonal Antibody

Catalog No: #30988



Package Size: #30988-1 50ul #30988-2 100ul

Orders: order@signalwayantibody.com
Support: tech@signalwayantibody.com

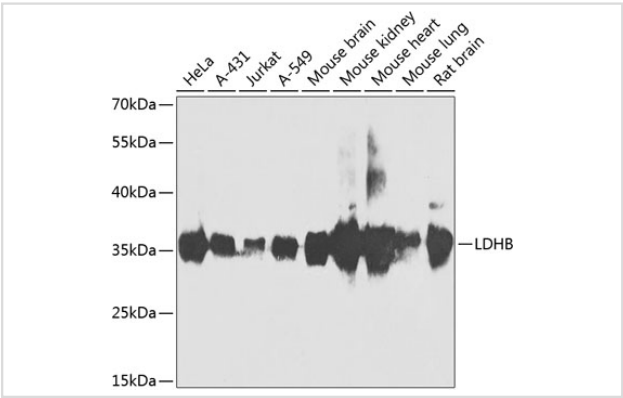
Description

Product Name	LDHB Polyclonal Antibody
Host Species	Rabbit
Clonality	Polyclonal
Isotype	IgG
Purification	Affinity purification
Applications	WB
Species Reactivity	Human;Mouse;Rat
Immunogen Description	Recombinant fusion protein of human LDHB (NP_002291.1).
Conjugates	Unconjugated
Other Names	LDHB;HEL-S-281;LDH-B;LDH-H;LDHBD;TRG-5
Accession No.	Uniprot:P07195GenelD:3945
Calculated MW	37kDa
SDS-PAGE MW	37kDa
Formulation	PBS with 0.02% sodium azide,50% glycerol,pH7.3.
Storage	Store at -20°C. Avoid freeze / thaw cycles.

Application Details

WB 1:500 - 1:2000

Images



Western blot analysis of extracts of various cell lines, using LDHB antibody.

Background

This gene encodes the B subunit of lactate dehydrogenase enzyme, which catalyzes the interconversion of pyruvate and lactate with concomitant interconversion of NADH and NAD⁺ in a post-glycolysis process. Alternatively spliced transcript variants have been found for this gene. Recent studies have shown that a C-terminally extended isoform is produced by use of an alternative in-frame translation termination codon via a stop codon readthrough mechanism, and that this isoform is localized in the peroxisomes. Mutations in this gene are associated with lactate dehydrogenase B

deficiency. Pseudogenes have been identified on chromosomes X, 5 and 13.

Published Papers

el at., Identification of lactate metabolism-related genes for glioma metabolic reprogramming, , (2022)

PMID:

Note: This product is for in vitro research use only and is not intended for use in humans or animals.