

## CAMK1G Antibody

Catalog No: #31041

Package Size: #31041-1 50ul #31041-2 100ul

Orders: [order@signalwayantibody.com](mailto:order@signalwayantibody.com)Support: [tech@signalwayantibody.com](mailto:tech@signalwayantibody.com)

## Description

Product Name	CAMK1G Antibody
Host Species	Rabbit
Clonality	Polyclonal
Applications	ELISA WB
Species Reactivity	Hu
Specificity	The antibody detects endogenous level of total CAMK1G protein.
Immunogen Type	Recombinant protein
Immunogen Description	Fusion protein corresponding to a region derived from 23-277 amino acids of human calcium/calmodulin-dependent protein kinase IG
Target Name	CAMK1G
Other Names	calcium/calmodulin-dependent protein kinase IG, VWS1, CLICKIII, dJ272L16.1
Accession No.	Genbank No.: BC032787
Concentration	0.3mg/ml
Formulation	Supplied at 0.7mg/mL in phosphate buffered saline (without Mg <sup>2+</sup> and Ca <sup>2+</sup> ), pH 7.3, 0.05% sodium azide and 50% glycerol.
Storage	Store at -20°C/1 year

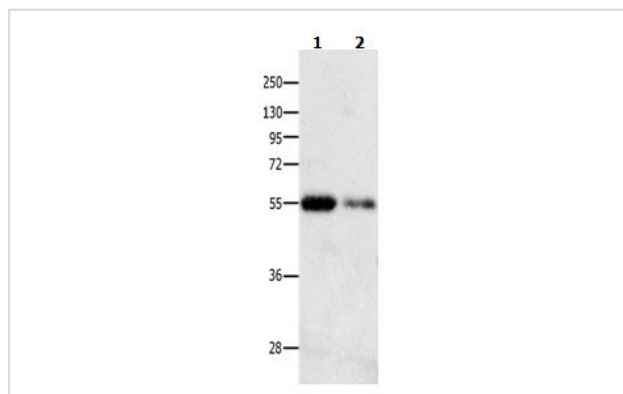
## Application Details

Predicted MW: 53kd

ELISA: 1:1000-1:5000

Western blotting: 1:500-1:2000

## Images



Gel: 10%SDS-PAGE

Lane1: Human colon cancer tissue lysate

Lane2: Human stomach cancer tissue lysate

Lysates: 30 ug

Primary antibody: 1/350 dilution

Secondary antibody: Goat anti Rabbit IgG - H&amp;L (HRP) at 1/10000 dilution

Exposure time: 5 minutes

## Background

This gene encodes a protein similar to calcium/calmodulin dependent protein kinase, however, its exact function is not

known.Calcium/calmodulin-dependent protein kinase belonging to a proposed calcium-triggered signaling cascade. In vitro phosphorylates transcription factor CREB1.

---

Note: This product is for in vitro research use only and is not intended for use in humans or animals.