

RXFP4 Antibody

Catalog No: #31297

Package Size: #31297-1 50ul #31297-2 100ul

Orders: order@signalwayantibody.com

Support: tech@signalwayantibody.com

Description

Product Name	RXFP4 Antibody
Host Species	Rabbit
Clonality	Polyclonal
Applications	ELISA WB
Species Reactivity	Human;Mouse
Specificity	The antibody detects endogenous level of total RXFP4 protein.
Immunogen Type	Peptide
Immunogen Description	Synthetic peptide corresponding to a region derived from 360-374 amino acids of human elaxin/insulin-like family peptide receptor 4
Conjugates	Unconjugated
Target Name	RXFP4
Other Names	Elaxin/insulin-like family peptide receptor 4, GPR100; RLN3R2; RXFPR4; GPCR142
Accession No.	Genbank No.: NP_871001
Formulation	Supplied at 2.7mg/mL in phosphate buffered saline (without Mg ²⁺ and Ca ²⁺), pH 7.3, 0.05% sodium azide and 50% glycerol.
Storage	Store at -20°C/1 year

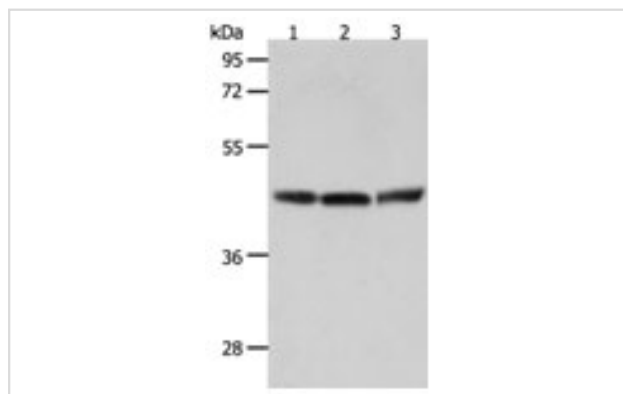
Application Details

Predicted MW: 41kd

ELISA: 1:1000-1:2000

Western blotting: 1:200-1:1000

Images



Gel: 10%SDS-PAGE

Lane1: Human fetal lung tissue lysate

Lane2: A549 cell lysate

Lane3: Mouse lung tissue lysate

Lysates: 40 ug per lane

Primary antibody: 1/200 dilution

Secondary antibody: Goat anti Rabbit IgG - H&L (HRP) at 1/10000 dilution

Exposure time: 5 minutes

Background

Relaxin/insulin-like family peptide receptor 4, also known as RXFP4, is a human G-protein coupled receptor. GPR100 is a member of the rhodopsin

family of G protein-coupled receptors (GPRs). High affinity receptor for INSL5. Also acts as receptor for RLN3/relaxin-3, as well as bradykinin and kallidin. Binding of the ligand inhibit cAMP accumulation. Expressed in a broader range of tissues including brain, kidney, testis, thymus, placenta, prostate, salivary gland, thyroid and colon.

Note: This product is for in vitro research use only and is not intended for use in humans or animals.