

ACO2 Antibody

Catalog No: #31299

Package Size: #31299-1 50ul #31299-2 100ul

Orders: order@signalwayantibody.comSupport: tech@signalwayantibody.com

Description

Product Name	ACO2 Antibody
Host Species	Rabbit
Clonality	Polyclonal
Applications	ELISA WB
Species Reactivity	Human;Mouse;Rat
Specificity	The antibody detects endogenous level of total ACO2 protein.
Immunogen Type	Peptide
Immunogen Description	Synthetic peptide corresponding to a region derived from 766-780 amino acids of human aconitase 2, mitochondrial
Conjugates	Unconjugated
Target Name	ACO2
Other Names	Aconitase 2, mitochondrial, ICRD; ACONM
Accession No.	Genbank No.: NP_001089
Formulation	Supplied at 0.9mg/mL in phosphate buffered saline (without Mg ²⁺ and Ca ²⁺), pH 7.3, 0.05% sodium azide and 50% glycerol.
Storage	Store at -20°C/1 year

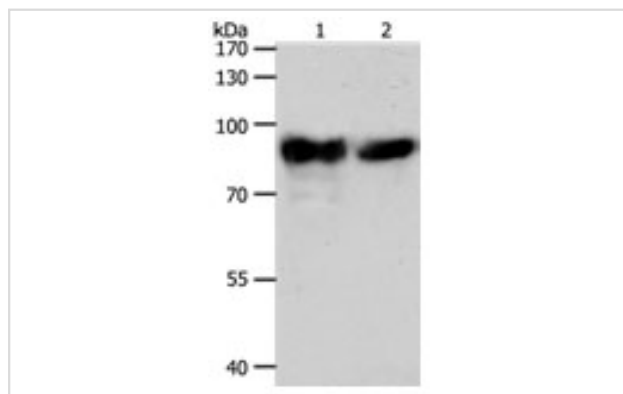
Application Details

Predicted MW: 85kd

ELISA: 1:2000-1:5000

Western blotting: 1:500-1:2000

Images



Gel: 8%SDS-PAGE

Lane1: Mouse heart tissue lysate

Lane2: Hela cell lysate

Lysates: 40 ug per lane

Primary antibody: 1/400 dilution

Secondary antibody: Goat anti Rabbit IgG - H&L (HRP) at 1/10000 dilution

Exposure time: 3 seconds

Background

The protein encoded by this gene belongs to the aconitase/IPM isomerase family. It is an enzyme that catalyzes the interconversion of citrate to

isocitrate via cis-aconitate in the second step of the TCA cycle. This protein is encoded in the nucleus and functions in the mitochondrion. It was found to be one of the mitochondrial matrix proteins that are preferentially degraded by the serine protease 15 (PRSS15), also known as Lon protease, after oxidative modification.?

Note: This product is for in vitro research use only and is not intended for use in humans or animals.