

## LEPREL1 Polyclonal Antibody

Catalog No: #31430

Package Size: #31430-1 50ul #31430-2 100ul

Orders: [order@signalwayantibody.com](mailto:order@signalwayantibody.com)Support: [tech@signalwayantibody.com](mailto:tech@signalwayantibody.com)

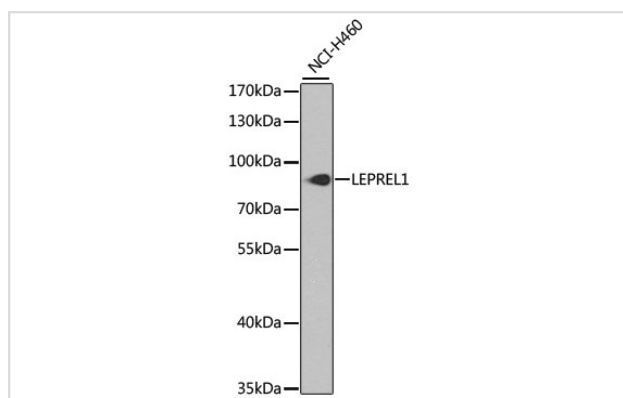
## Description

Product Name	LEPREL1 Polyclonal Antibody
Host Species	Rabbit
Clonality	Polyclonal
Isotype	IgG
Purification	Affinity purification
Applications	WB
Species Reactivity	Human;Mouse;Rat
Immunogen Description	Recombinant fusion protein of human LEPREL1 (NP_060662.2).
Conjugates	Unconjugated
Other Names	P3H2; LEPREL1; MCVD; MLAT4; prolyl 3-hydroxylase 2
Accession No.	Swiss-Prot#:Q8IVL5NCBI Gene ID:55214
Calculated MW	85kDa
Formulation	Avoid freeze / thaw cycles. Buffer: PBS with 50% glycerol, pH7.4.
Storage	Store at -20°C

## Application Details

WB □ 1:500 - 1:2000

## Images



Western blot analysis of extracts of NCI-H460 cells, using LEPREL1 antibody.

## Background

This gene encodes a member of the prolyl 3-hydroxylase subfamily of 2-oxo-glutarate-dependent dioxygenases. These enzymes play a critical role in collagen chain assembly, stability and cross-linking by catalyzing post-translational 3-hydroxylation of proline residues. Mutations in this gene are associated with nonsyndromic severe myopia with cataract and vitreoretinal degeneration, and downregulation of this gene may play a role in breast cancer. Alternatively spliced transcript variants encoding multiple isoforms have been observed for this gene.

---

Note: This product is for in vitro research use only and is not intended for use in humans or animals.