

## POP7 Polyclonal Antibody

Catalog No: #31460

Package Size: #31460-1 50ul #31460-2 100ul

Orders: [order@signalwayantibody.com](mailto:order@signalwayantibody.com)Support: [tech@signalwayantibody.com](mailto:tech@signalwayantibody.com)

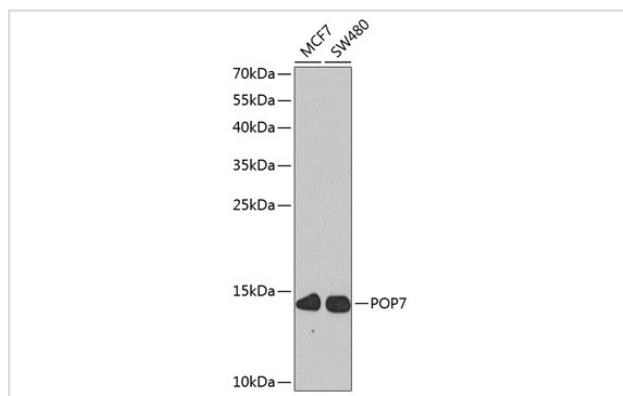
## Description

|                       |   |
|-----------------------|---|
| Product Name          | POP7 Polyclonal Antibody                                |
| Host Species          | Rabbit  |
| Clonality             | Polyclonal  |
| Isotype               | IgG   |
| Purification          | Affinity purification                                   |
| Applications          | WB  |
| Species Reactivity    | Human   |
| Immunogen Description | Recombinant fusion protein of human POP7 (NP_005828.2). |
| Conjugates            | Unconjugated  |
| Other Names           | POP7;0610037N12Rik;RPP2;RPP20                           |
| Accession No.         | Uniprot:O75817GeneID:10248                              |
| Calculated MW         | 14kDa   |
| SDS-PAGE MW           | 14kDa   |
| Formulation           | PBS with 0.02% sodium azide,50% glycerol,pH7.3.         |
| Storage               | Store at -20°C. Avoid freeze / thaw cycles.             |

## Application Details

WB □ 1:500 - 1:2000

## Images



Western blot analysis of extracts of various cell lines, using POP7 antibody.

## Background

Component of ribonuclease P, a ribonucleoprotein complex that generates mature tRNA molecules by cleaving their 5'-ends. Also a component of the MRP ribonuclease complex, which cleaves pre-rRNA sequences.

---

Note: This product is for in vitro research use only and is not intended for use in humans or animals.