

HYLS1 Polyclonal Antibody

Catalog No: #31495

Package Size: #31495-1 50ul #31495-2 100ul

Orders: order@signalwayantibody.comSupport: tech@signalwayantibody.com

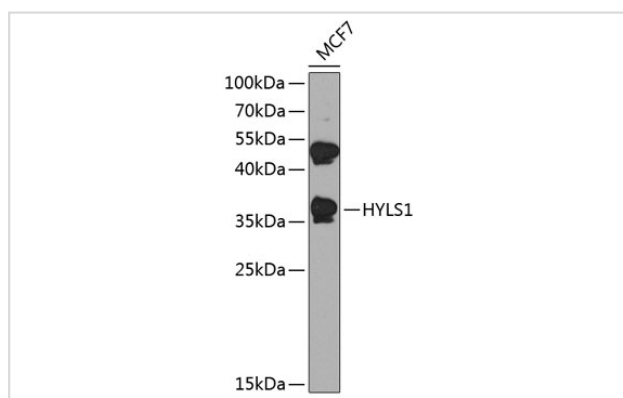
Description

Product Name	HYLS1 Polyclonal Antibody
Host Species	Rabbit
Clonality	Polyclonal
Isotype	IgG
Purification	Affinity purification
Applications	WB
Species Reactivity	Human
Immunogen Description	Recombinant fusion protein of human HYLS1 (NP_659451.1).
Conjugates	Unconjugated
Other Names	HYLS1;HLS
Accession No.	Uniprot:Q96M11GeneID:219844
Calculated MW	37kDa
SDS-PAGE MW	37kDa
Formulation	PBS with 0.02% sodium azide,50% glycerol,pH7.3.
Storage	Store at -20°C. Avoid freeze / thaw cycles.

Application Details

WB □ 1:500 - 1:2000

Images



Western blot analysis of extracts of MCF-7 cells, using HYLS1 antibody.

Background

This gene encodes a protein localized to the cytoplasm. Mutations in this gene are associated with hydroletharus syndrome. Multiple alternatively spliced variants, encoding the same protein, have been identified.

Published Papers

Zhao Gaoxiang, Luo Shudi, Zhao Hong, Ma Qingxia, Jiang Hongfei, Wang Lin, Liu Juanjuan, Guo Dong, Wang Runze, Xu Qianqian, Lun Jie, Xie Ranran, Duan Yixin, Ma Leina, Qiu Wensheng, Fang Jing, Lu Zhimin et al., Nucleus-translocated glucokinase functions as a protein kinase to phosphorylate TAZ and promote tumour growth, Nature communications, (2025)

[PMID:40759645](#)

Note: This product is for in vitro research use only and is not intended for use in humans or animals.