

ATF6 Antibody

Catalog No: #32008

Package Size: #32008-1 50ul #32008-2 100ul

Orders: order@signalwayantibody.comSupport: tech@signalwayantibody.com

Description

Product Name	ATF6 Antibody
Host Species	Rabbit
Clonality	Polyclonal
Purification	Antibodies were purified by affinity purification using immunogen.
Applications	WB IHC IF
Species Reactivity	Human;Mouse;Rat
Specificity	The antibody detects endogenous level of total ATF6 protein.
Immunogen Type	Peptide
Immunogen Description	A synthetic peptide of human ATF6.
Conjugates	Unconjugated
Target Name	ATF6
Other Names	ATF6; ATF6A; Activatingtranscriptionfactor6alpha;
Accession No.	Swiss-Prot:P18850NCBI Gene ID:22926
SDS-PAGE MW	75KD
Concentration	1.0mg/ml
Formulation	Supplied at 1.0mg/mL in phosphate buffered saline (without Mg2+ and Ca2+), pH 7.4, 150mM NaCl, 0.02% sodium azide and 50% glycerol.
Storage	Store at -20°C

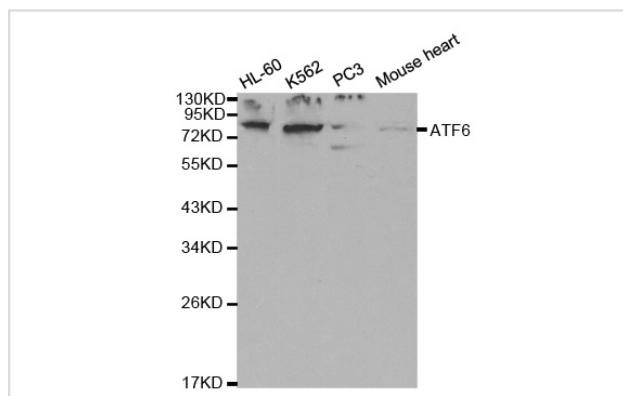
Application Details

Western blotting: 1:500 - 1:2000

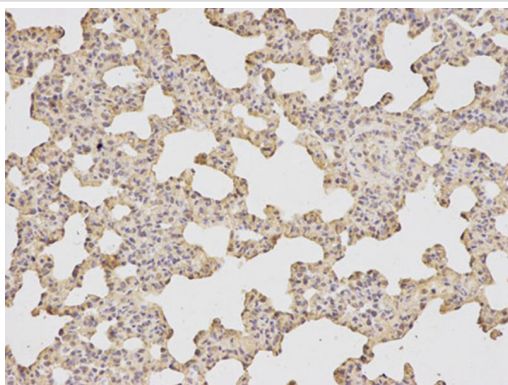
Immunohistochemistry: 1:50 - 1:200

Immunofluorescence: 1:50 - 1:200

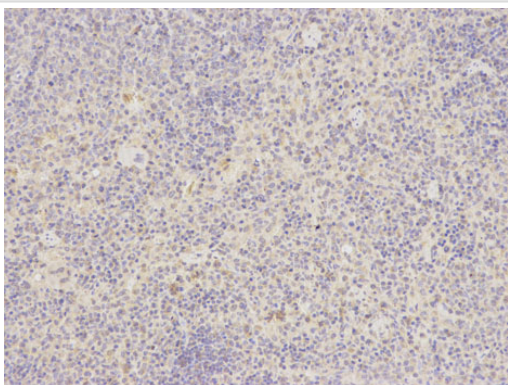
Images



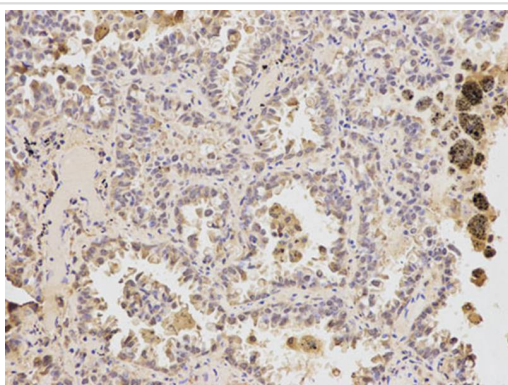
Western blot analysis of extracts of various cell lines, using ATF6 antibody.



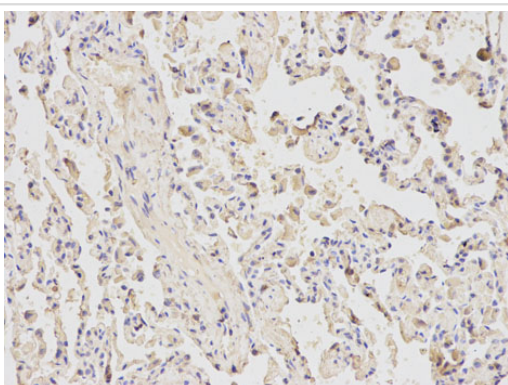
Immunohistochemical analysis of paraffin-embedded human lung using ATF6 antibody at dilution of 1:200 (200x lens).



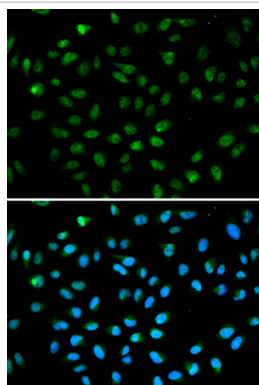
Immunohistochemical analysis of paraffin-embedded human lung cancer using ATF6 antibody at dilution of 1:200 (200x lens).



Immunohistochemical analysis of paraffin-embedded rat lung using ATF6 antibody at dilution of 1:200 (200x lens).



Immunohistochemical analysis of paraffin-embedded rat spleen using ATF6 antibody at dilution of 1:200 (200x lens).



Immunofluorescence analysis of A549 cell using ATF6 antibody. Blue: DAPI for nuclear staining

Background

This gene encodes a transcription factor that activates target genes for the unfolded protein response (UPR) during endoplasmic reticulum (ER) stress. Although it is a transcription factor, this protein is unusual in that it is synthesized as a transmembrane protein that is embedded in the ER. It functions as an ER stress sensor/transducer, and following ER stress-induced proteolysis, it functions as a nuclear transcription factor via a cis-acting ER stress response element (ERSE) that is present in the promoters of genes encoding ER chaperones. This protein has been identified as a survival factor for quiescent but not proliferative squamous carcinoma cells. There have been conflicting reports about the association of polymorphisms in this gene with diabetes in different populations, but another polymorphism has been associated with increased plasma cholesterol levels. This gene is also thought to be a potential therapeutic target for cystic fibrosis.

Published Papers

el at., Pharmacologic ATF6 activation confers global protection In widespread disease models by reprogramming cellular proteostasis. In Nat Commun on 2019 Jan 14 by Blackwood EA, Azizi K, et al.. PMID:30643122, , (2019)

[PMID:30643122](#)

el at., Magnesium Isoglycyrrhizinate Promotes the Activated Hepatic Stellate Cells Apoptosis via Endoplasmic Reticulum Stress and Ameliorates Fibrogenesis in Vitro and in Vivo. In Biofactors on 2017 Nov by Mianli Bian , Xingran Chen, et al.. PMID: 29048780, , (2017)

[PMID:29048780](#)

el at., Quercetin Stimulates Mitochondrial Apoptosis Dependent on Activation of Endoplasmic Reticulum Stress in Hepatic Stellate Cells .In Pharm Biol. On 2016 Dec by Liwei He , Xianbang Hou et al.. PMID:27572285

, , (2016)

[PMID:27572285](#)

el at., 5i ζ itroi ?i ?3i ζ henylpropylamino) benzoic acid induces apoptosis of human lens epithelial cells via reactive oxygen species and endoplasmic reticulum stress through the mitochondrial apoptosis pathway. In Int J Mol Med on 2021 Apr by Lingzhi Niu, Xin Liu, et al.. PMID:33604681, , (2021)

[PMID:33604681](#)

el at., ATF6 aggravates angiogenesis-osteogenesis coupling during ankylosing spondylitis by mediating FGF2 expression in chondrocytes. In iScience on 2021 Jun 28 by Mengjun Ma, Hongyu Li, et al.. PMID:34296071, , (2021)

[PMID:34296071](#)

Lei Chen; Xia Zhao; Rui Sheng; Philip Lazarovici; Wenhua Zheng el at., Artemisinin alleviates astrocyte overactivation and neuroinflammation by modulating the IRE1/NF-κB signaling pathway in in vitro and in vivo Alzheimer's disease models., , (2025)

[PMID:39826816](#)

Note: This product is for in vitro research use only and is not intended for use in humans or animals.