

BRCA1 Antibody

Catalog No: #32016

Package Size: #32016-1 50ul #32016-2 100ul

Orders: order@signalwayantibody.comSupport: tech@signalwayantibody.com

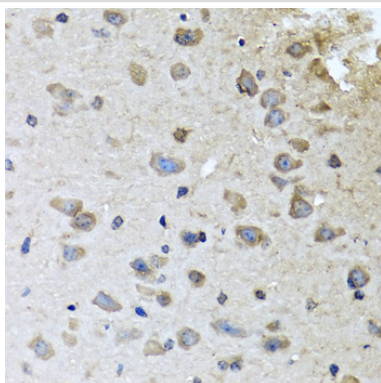
Description

Product Name	BRCA1 Antibody
Host Species	Rabbit
Clonality	Polyclonal
Isotype	IgG
Purification	Affinity purification
Applications	WB,IHC
Species Reactivity	Human;Mouse
Specificity	The antibody detects endogenous level of total BRCA1 protein.
Immunogen Type	Peptide
Immunogen Description	A synthetic peptide of human BRCA1 (NP_009225.1).
Conjugates	Unconjugated
Target Name	BRCA1
Other Names	BRCA1;BRCAI;BRCC1;BROVCA1;FANCS;IRIS;PNCA4;PPP1R53;PSCP;RNF53
Accession No.	Uniprot:P38398GeneID:672
Calculated MW	208 kDa
SDS-PAGE MW	250 kDa
Concentration	1.0mg/ml
Formulation	PBS with 0.02% sodium azide,50% glycerol,pH7.3.
Storage	Store at -20°C. Avoid freeze / thaw cycles.

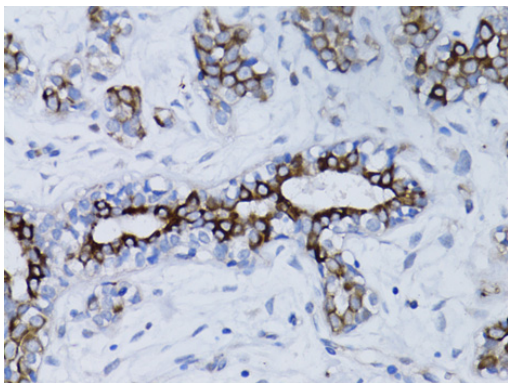
Application Details

WB□1:500 - 1:2000IHC□1:50 - 1:200

Images



Immunohistochemistry of paraffin-embedded mouse brain using BRCA1 antibody.



Immunohistochemistry of paraffin-embedded human breast cancer using BRCA1 antibody.

Background

This gene encodes a nuclear phosphoprotein that plays a role in maintaining genomic stability, and it also acts as a tumor suppressor. The encoded protein combines with other tumor suppressors, DNA damage sensors, and signal transducers to form a large multi-subunit protein complex known as the BRCA1-associated genome surveillance complex (BASC). This gene product associates with RNA polymerase II, and through the C-terminal domain, also interacts with histone deacetylase complexes. This protein thus plays a role in transcription, DNA repair of double-stranded breaks, and recombination. Mutations in this gene are responsible for approximately 40% of inherited breast cancers and more than 80% of inherited breast and ovarian cancers. Alternative splicing plays a role in modulating the subcellular localization and physiological function of this gene. Many alternatively spliced transcript variants, some of which are disease-associated mutations, have been described for this gene, but the full-length nature of only some of these variants has been described. A related pseudogene, which is also located on chromosome 17, has been identified.

Published Papers

el at., SIRT7 Downregulation Promotes Breast Cancer Metastasis Via LAP2 α -Induced Chromosomal Instability In Int J Biol Sci On 2023 Mar by Qin

Huo?1,?Siqi Chen et al.. PMID: 37056924, , (2023)

[PMID:37056924](#)

Note: This product is for in vitro research use only and is not intended for use in humans or animals.