

PML Antibody

Catalog No: #32211

Package Size: #32211-1 50ul #32211-2 100ul

Orders: order@signalwayantibody.comSupport: tech@signalwayantibody.com

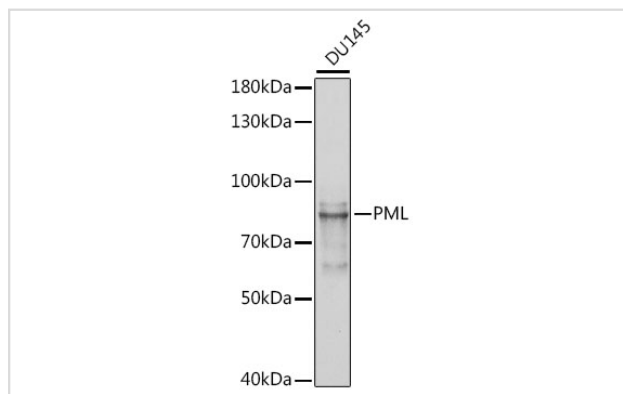
Description

Product Name	PML Antibody
Host Species	Rabbit
Clonality	Polyclonal
Isotype	IgG
Purification	Affinity purification
Applications	WB,IHC
Species Reactivity	Human;Mouse;Rat
Specificity	The antibody detects endogenous level of total PML protein.
Immunogen Type	Recombinant Protein
Immunogen Description	Recombinant fusion protein of human PML (NP_150253.2).
Conjugates	Unconjugated
Target Name	PML
Other Names	MYL;PP8675;RNF71;TRIM19;PML
Accession No.	Uniprot:P29590GeneID:5371
SDS-PAGE MW	70-130kDa
Concentration	1.0mg/ml
Formulation	PBS with 0.02% sodium azide,50% glycerol,pH7.3.
Storage	Store at -20°C. Avoid freeze / thaw cycles.

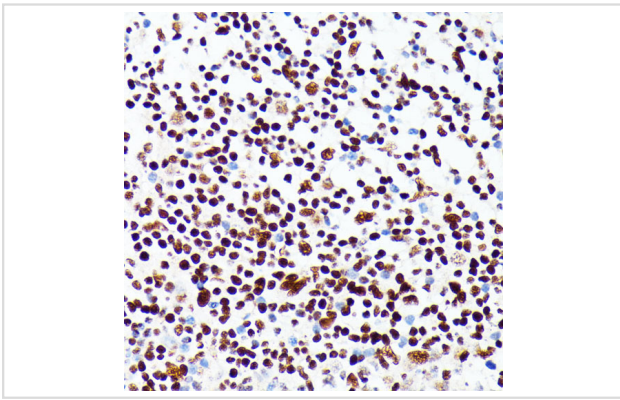
Application Details

WB□1:500 - 1:2000IHC□1:50 - 1:200

Images



Western blot analysis of extracts of various cell lines, using PML antibody.



Immunohistochemistry of paraffin-embedded human appendix using PML antibody.

Background

The protein encoded by this gene is a member of the tripartite motif (TRIM) family. The TRIM motif includes three zinc-binding domains, a RING, a B-box type 1 and a B-box type 2, and a coiled-coil region. This phosphoprotein localizes to nuclear bodies where it functions as a transcription factor and tumor suppressor. Its expression is cell-cycle related and it regulates the p53 response to oncogenic signals. The gene is often involved in the translocation with the retinoic acid receptor alpha gene associated with acute promyelocytic leukemia (APL). Extensive alternative splicing of this gene results in several variations of the protein's central and C-terminal regions; all variants encode the same N-terminus. Alternatively spliced transcript variants encoding different isoforms have been identified.

Note: This product is for in vitro research use only and is not intended for use in humans or animals.