

CREB1 Antibody

Catalog No: #32215



Package Size: #32215-1 50ul #32215-2 100ul

Orders: order@signalwayantibody.com
Support: tech@signalwayantibody.com

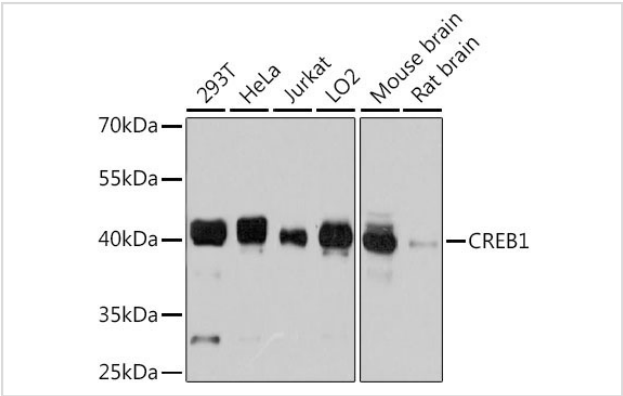
Description

Product Name	CREB1 Antibody
Host Species	Rabbit
Clonality	Polyclonal
Purification	Affinity purification
Applications	WB;IHC;IF;IP
Species Reactivity	Human;Mouse;Rat
Specificity	The antibody detects endogenous level of total CREB1 protein.
Immunogen Type	Recombinant Protein
Immunogen Description	Recombinant protein of human CREB1.
Conjugates	Unconjugated
Target Name	CREB1
Other Names	CREB1; CREB; MGC9284;
Accession No.	Swiss-Prot:P16220NCBI Gene ID:1385
Calculated MW	35kDa
SDS-PAGE MW	43kDa
Concentration	1.0mg/ml
Formulation	PBS containing 50% glycerol, preserved with proclin300 or sodium azide (as specified on the Certificate of Analysis), pH 7.3.
Storage	Store at -20°C

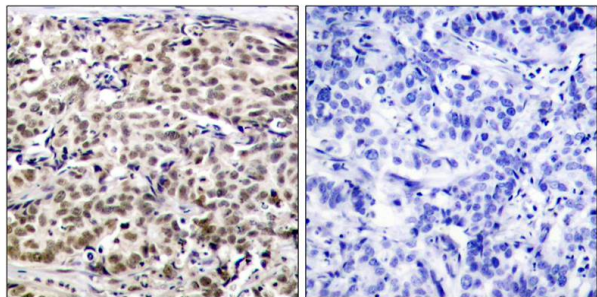
Application Details

WB 1:500 - 1:2000; IHC 1:50 - 1:200; IF 1:50 - 1:200; IP 0.5ug-4ug antibody for 200ug-400ug extracts of whole cells

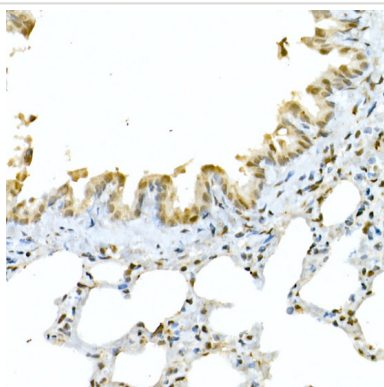
Images



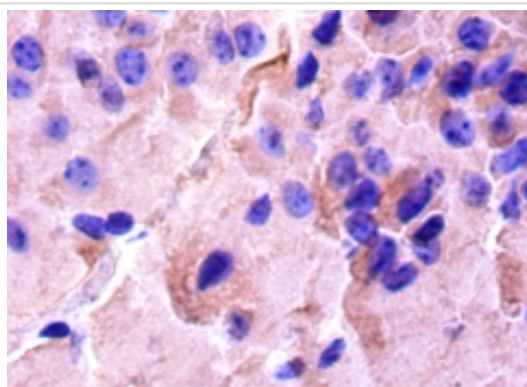
Western blot analysis of extracts from various cell lines using CREB1 antibody.



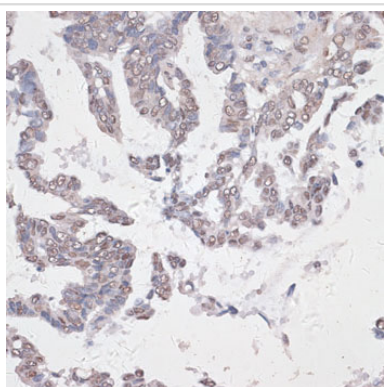
Immunohistochemical analysis of paraffin-embedded human breast carcinoma tissue using CREB Antibody (left) or the same antibody preincubated with blocking peptide(right).



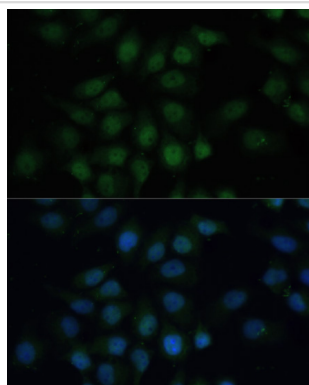
Immunohistochemistry analysis of paraffin-embedded Rat lung using CREB1 Antibody at dilution of 1:50 (40x lens).



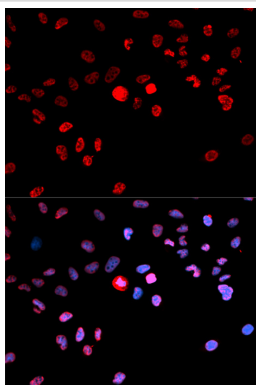
Immunohistochemistry analysis of paraffin-embedded Mouse brain using CREB1 Antibody at dilution of 1:50 (40x lens).



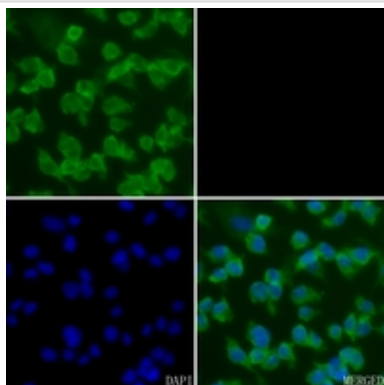
Immunohistochemistry of paraffin-embedded human lung cancer using CREB1 antibody.



Immunofluorescence analysis of HeLa cells using CREB1 antibody at dilution of 1:100. Blue: DAPI for nuclear staining.



Immunofluorescence analysis of MCF-7 cells using CREB1 antibody . Blue: DAPI for nuclear staining.



Immunofluorescent analysis of CREB staining in BV2 cells.

Background

CREB is a bZIP transcription factor that activates target genes through cAMP response elements. CREB is able to mediate signals from numerous physiological stimuli, resulting in regulation of a broad array of cellular responses. While CREB is expressed in numerous tissues, it plays a large regulatory role in the nervous system. CREB is believed to play a key role in promoting neuronal survival, precursor proliferation, neurite outgrowth, and neuronal differentiation in certain neuronal populations (1-3). Additionally, CREB signaling is involved in learning and memory in several organisms (4-6). CREB is able to selectively activate numerous downstream genes through interactions with different dimerization partners. CREB is activated by phosphorylation at Ser133 by various signaling pathways including Erk, Ca²⁺, and stress signaling. Some of the kinases involved in phosphorylating CREB at Ser133 are p90RSK, MSK, CaMKIV, and MAPKAPK-2 (7-9).

Published Papers

el at., ε⁹-Cryptoxanthin Suppresses UVB-induced Melanogenesis in Mouse: Involvement of the Inhibition of Prostaglandin E2 and Melanocyte-Stimulating Hormone Pathways. In J Pharm Pharmacol on 2012 Aug by Hiroshi Shimoda, Shao-Jie Shan, et al..PMID: 22775220, , (2012)

[PMID:22775220](#)

el at., Gene expression pattern in PC12 cells with reduced PMCA2 or PMCA3 isoform: selective up-regulation of calmodulin and neuromodulin. In Mol Cell Biochem on 2012 Jan by Tomasz Boczek, Anna Kozaczuk, et al..PMID: 21912933, , (2012)

[PMID:21912933](#)

Yuwen Liu;Jiping Liu;Naping Hu;Zhengrong Li;Anqi Liu;Ruyue Luo;Siyu Du;Dongyan Guo;Jiankang Li;Jialin Duan el at., Classical prescription Daqinjiao decoction inhibit cerebral ischemia/reperfusion induced necroptosis and ferroptosis through multiple mechanisms., , (2025)

[PMID:39736347](#)

Note: This product is for in vitro research use only and is not intended for use in humans or animals.