

# A2M Antibody

Catalog No: #32318



Package Size: #32318-1 50ul #32318-2 100ul

Orders: [order@signalwayantibody.com](mailto:order@signalwayantibody.com)  
Support: [tech@signalwayantibody.com](mailto:tech@signalwayantibody.com)

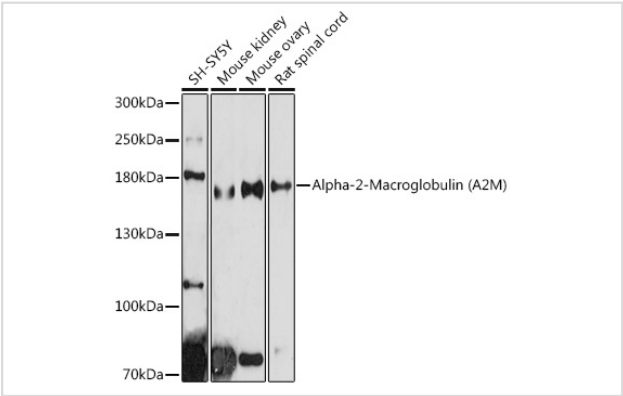
## Description

Product Name	A2M Antibody
Host Species	Rabbit
Clonality	Polyclonal
Isotype	IgG
Purification	Affinity purification
Applications	WB
Species Reactivity	Human;Mouse;Rat
Specificity	The antibody detects endogenous level of total A2M protein.
Immunogen Type	Peptide
Immunogen Description	Recombinant fusion protein of human Alpha-2-Macroglobulin (Alpha-2-Macroglobulin (A2M)) (NP_000005.2).
Conjugates	Unconjugated
Target Name	A2M
Other Names	A2M;A2MD;CPAMD5;FWP007;S863-7
Accession No.	Uniprot:P01023GeneID:2
SDS-PAGE MW	160kDa
Concentration	1.0mg/ml
Formulation	PBS with 0.02% sodium azide,50% glycerol,pH7.3.
Storage	Store at -20°C. Avoid freeze / thaw cycles.

## Application Details

WB 1:500 - 1:2000

## Images



Western blot analysis of extracts of various cell lines, using Alpha-2-Macroglobulin (Alpha-2-Macroglobulin (A2M)) antibody.

## Background

Alpha-2-macroglobulin is a protease inhibitor and cytokine transporter. It inhibits many proteases, including trypsin, thrombin and collagenase. A2M is

implicated in Alzheimer disease (AD) due to its ability to mediate the clearance and degradation of A-beta, the major component of beta-amyloid deposits.

---

Note: This product is for in vitro research use only and is not intended for use in humans or animals.