

NPPA Antibody

Catalog No: #32338

Package Size: #32338-1 50ul #32338-2 100ul

Orders: order@signalwayantibody.comSupport: tech@signalwayantibody.com

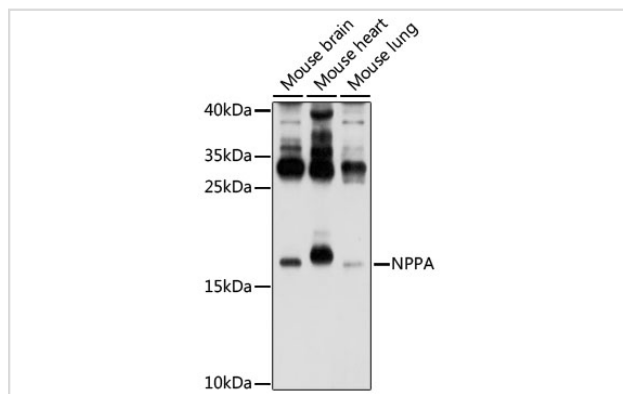
Description

Product Name	NPPA Antibody
Host Species	Rabbit
Clonality	Polyclonal
Purification	Antibodies were purified by affinity purification using immunogen.
Applications	WB
Species Reactivity	Human;Mouse;Rat
Specificity	The antibody detects endogenous level of total NPPA protein.
Immunogen Type	Recombinant Protein
Immunogen Description	Recombinant protein of human NPPA.
Conjugates	Unconjugated
Target Name	NPPA
Other Names	ANF; ANP; PND; ATFB6; CDD-ANF
Accession No.	Swiss-Prot:P01160NCBI Gene ID:4878
SDS-PAGE MW	17KD
Concentration	1.0mg/ml
Formulation	Supplied at 1.0mg/mL in phosphate buffered saline (without Mg ²⁺ and Ca ²⁺), pH 7.4, 150mM NaCl, 0.02% sodium azide and 50% glycerol.
Storage	Store at -20°C

Application Details

WB 1:500 - 1:2000

Images



Western blot analysis of extracts of various cell lines, using NPPA antibody at 1:1000 dilution.

Background

The protein encoded by this gene belongs to the natriuretic peptide family. Natriuretic peptides are implicated in the control of extracellular fluid volume

and electrolyte homeostasis. This protein is synthesized as a large precursor (containing a signal peptide), which is processed to release a peptide from the N-terminus with similarity to vasoactive peptide, cardiodilatin, and another peptide from the C-terminus with natriuretic-diuretic activity. Mutations in this gene have been associated with atrial fibrillation familial type 6.

Published Papers

Doe Jane; Huang Ming-Jie;Xu Jiale;Qiao Hui;Zhao Wen;Huang Lihua et al., Design, Synthesis, and Evaluation of the Selective and Orally Active LSD1 Inhibitor with the Potential of Treating Heart Failure, , (2024)

PMID:

Note: This product is for in vitro research use only and is not intended for use in humans or animals.