

PSRC1 Antibody

Catalog No: #32879



Package Size: #32879-1 50ul #32879-2 100ul

Orders: order@signalwayantibody.com
Support: tech@signalwayantibody.com

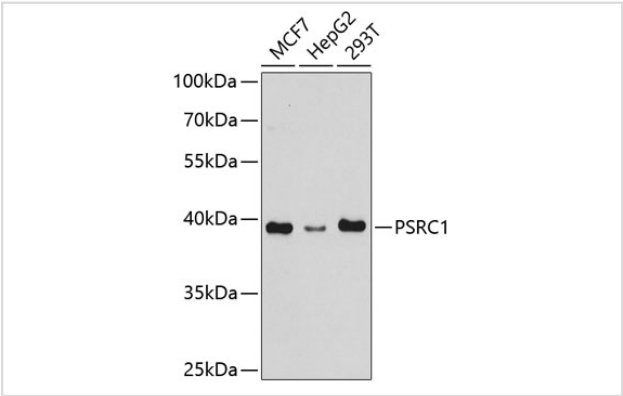
Description

Product Name	PSRC1 Antibody
Host Species	Rabbit
Clonality	Polyclonal
Isotype	IgG
Purification	Affinity purification
Applications	WB,IF
Species Reactivity	Human;Mouse;Rat
Specificity	The antibody detects endogenous level of total PSRC1 protein.
Immunogen Type	Recombinant Protein
Immunogen Description	Recombinant fusion protein of human PSRC1 (NP_001005290.1).
Conjugates	Unconjugated
Target Name	PSRC1
Other Names	PSRC1;DDA3;FP3214
Accession No.	Uniprot:Q6PGN9GeneID:84722
SDS-PAGE MW	39kDa
Concentration	1.0mg/ml
Formulation	PBS with 0.02% sodium azide,50% glycerol,pH7.3.
Storage	Store at -20°C. Avoid freeze / thaw cycles.

Application Details

WB 1:500 - 1:2000IF 1:50 - 1:100

Images



Western blot analysis of extracts of various cell lines, using PSRC1 antibody.

Background

This gene encodes a proline-rich protein that is a target for regulation by the tumor suppressor protein p53. The encoded protein plays an important

role in mitosis by recruiting and regulating microtubule depolymerases that destabilize microtubules. Alternatively spliced transcript variants encoding different isoforms have been described.

Published Papers

el at., Construction and validation of a prognostic model with RNA binding protein-related mRNAs for the HBV-related hepatocellular carcinoma patients. In Front Oncol on 2022 Sep 23 by Shaohua Xu, Hui Liu,et al..PMID:36212461, , (2022)

[PMID:36212461](#)

Note: This product is for in vitro research use only and is not intended for use in humans or animals.