

CS Antibody

Catalog No: #32989



Package Size: #32989-1 50ul #32989-2 100ul

Orders: order@signalwayantibody.comSupport: tech@signalwayantibody.com

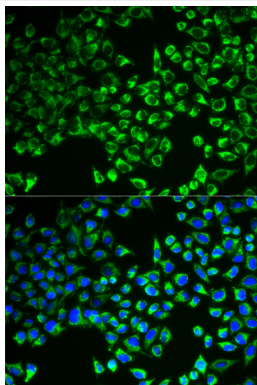
Description

Product Name	CS Antibody
Host Species	Rabbit
Clonality	Polyclonal
Purification	Antibodies were purified by affinity purification using immunogen.
Applications	WB,IF
Species Reactivity	Human;Mouse;Rat
Specificity	The antibody detects endogenous level of total CS protein.
Immunogen Type	Recombinant Protein
Immunogen Description	Recombinant protein of human CS.
Conjugates	Unconjugated
Target Name	CS
Accession No.	Swiss-Prot:O75390NCBI Gene ID:1431
SDS-PAGE MW	51KD
Concentration	1.0mg/ml
Formulation	Supplied at 1.0mg/mL in phosphate buffered saline (without Mg ²⁺ and Ca ²⁺), pH 7.4, 150mM NaCl, 0.02% sodium azide and 50% glycerol.
Storage	Store at -20°C

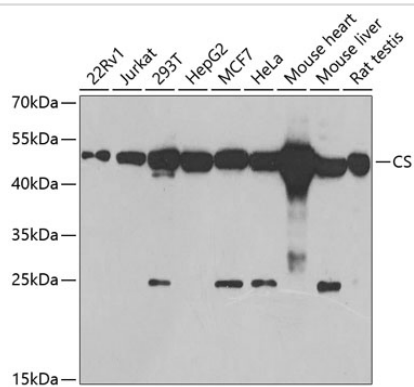
Application Details

WB 1:500 - 1:2000IF 1:50 - 1:200

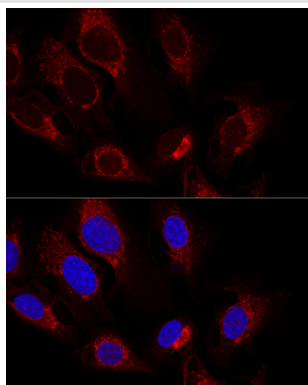
Images



Immunofluorescence analysis of MCF-7 cells using CS antibody. Blue: DAPI for nuclear staining.



Western blot analysis of extracts of various cell lines, using CS antibody at 1:1000 dilution. Secondary antibody: HRP Goat Anti-Rabbit IgG (H+L) (AS014) at 1:10000 dilution. Lysates/proteins: 25ug per lane. Blocking buffer: 3% nonfat dry milk in TBST. Detection: ECL Basic Kit (RM00020). Exposure time: 15s.



Confocal immunofluorescence analysis of U2OS cells using CS Polyclonal antibody at dilution of 1:100. Blue: DAPI for nuclear staining.

Background

The protein encoded by this gene is a Krebs tricarboxylic acid cycle enzyme that catalyzes the synthesis of citrate from oxaloacetate and acetyl coenzyme A. The enzyme is found in nearly all cells capable of oxidative metabolism. This protein is nuclear encoded and transported into the mitochondrial matrix, where the mature form is found.

Note: This product is for in vitro research use only and is not intended for use in humans or animals.