

## TIMP1 Antibody

Catalog No: #33502

Package Size: #33502-1 50ul #33502-2 100ul

Orders: [order@signalwayantibody.com](mailto:order@signalwayantibody.com)Support: [tech@signalwayantibody.com](mailto:tech@signalwayantibody.com)

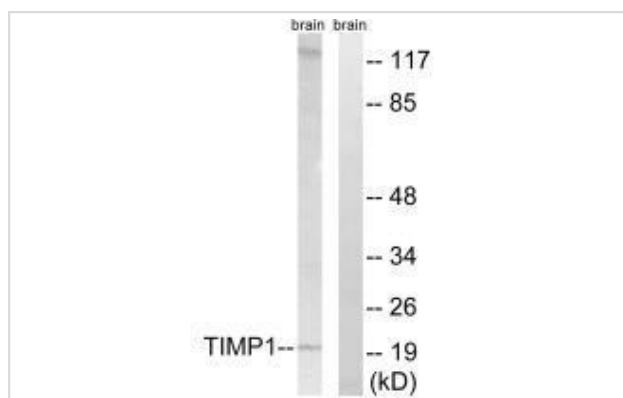
## Description

Product Name	TIMP1 Antibody
Host Species	Rabbit
Clonality	Polyclonal
Purification	The antibody was affinity-purified from rabbit antiserum by affinity-chromatography using epitope-specific immunogen.
Applications	WB
Species Reactivity	Human;Mouse;Rat
Specificity	The antibody detects endogenous levels of total TIMP1 protein.
Immunogen Type	Peptide
Immunogen Description	Synthesized peptide derived from internal of human TIMP1.
Conjugates	Unconjugated
Target Name	TIMP1
Other Names	tissue inhibitor of metalloproteinase 1;
Accession No.	Swiss-Prot: P01033NCBI Gene ID: 7076
SDS-PAGE MW	24kd
Concentration	1.0mg/ml
Formulation	Rabbit IgG in phosphate buffered saline (without Mg <sup>2+</sup> and Ca <sup>2+</sup> ), pH 7.4, 150mM NaCl, 0.02% sodium azide and 50% glycerol.
Storage	Store at -20°C

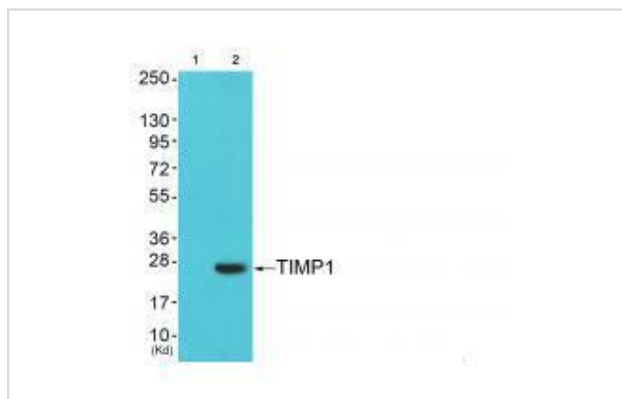
## Application Details

Western blotting: 1:500~1:3000

## Images



Western blot analysis of extracts from 293 cells, using TIMP1 antibody #33502.



Western blot analysis of extracts from cos-7 cells (Lane 2), using TIMP1 antibody #33502. The lane on the left is treated with synthesized peptide.

## Background

Metalloproteinase inhibitor that functions by forming one to one complexes with target metalloproteinases, such as collagenases, and irreversibly inactivates them by binding to their catalytic zinc cofactor. Acts on MMP1, MMP2, MMP3, MMP7, MMP8, MMP9, MMP10, MMP11, MMP12, MMP13 and MMP16. Does not act on MMP14. Also functions as a growth factor that regulates cell differentiation, migration and cell death and activates cellular signaling cascades via CD63 and ITGB1. Plays a role in integrin signaling. Mediates erythropoiesis in vitro; but, unlike IL3, it is species-specific, stimulating the growth and differentiation of only human and murine erythroid progenitors.

Anieta M. Sieuwerts, Clin. Chem., May 2007; 10.1373.

KM Fong, Clin. Cancer Res., Aug 1996; 2: 1369.

E. Susol, Rheumatology, Dec 2000; 39: 1332 - 1336.

Christopher J Jackson, Ann Rheum Dis, Mar 1998; 57: 158 - 161.

## Published Papers

el at., Combination therapy of chitosan, gynostemma, and motherwort alleviates the progression of experimental rat chronic renal failure by inhibiting STAT1 activation. In Oncotarget. On 2018 Mar 20 by Wenxia Bai, 1 Shudong Wang et al.. PMID: 29643988, , (2018)

[PMID:29643988](#)

el at., TGF  $\beta$ 1 mediated Smad signaling pathway and EMT in hepatic fibrosis induced by Nano NiO in vivo and in vitro. In Environ Toxicol on 2020 Apr by Zhang Q, Chang X, et al.. PMID: 31737983, , (2020)

[PMID:31737983](#)

Note: This product is for in vitro research use only and is not intended for use in humans or animals.