

SPI1 Antibody

Catalog No: #33699

Package Size: #33699-1 50ul #33699-2 100ul

Orders: order@signalwayantibody.comSupport: tech@signalwayantibody.com

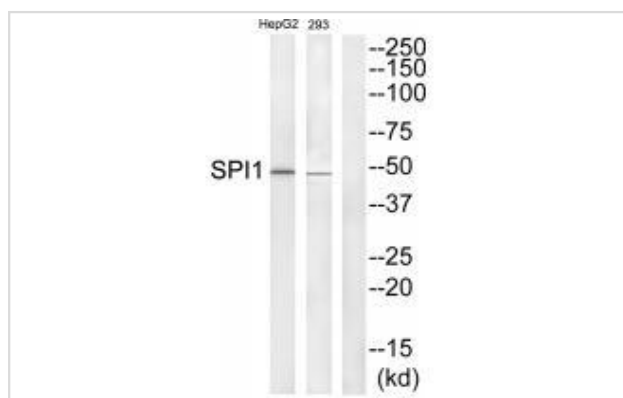
Description

| | |
|-----------------------|--|
| Product Name | SPI1 Antibody |
| Host Species | Rabbit |
| Clonality | Polyclonal |
| Purification | The antibody was affinity-purified from rabbit antiserum by affinity-chromatography using epitope-specific immunogen. |
| Applications | WB |
| Species Reactivity | Human;Mouse;Rat |
| Specificity | The antibody detects endogenous levels of total SPI1 protein. |
| Immunogen Type | Peptide |
| Immunogen Description | Synthesized peptide derived from internal of human SPI1. |
| Conjugates | Unconjugated |
| Target Name | SPI1 |
| Other Names | 31 kDa transforming protein; SPI1; transcription factor PU.1; |
| Accession No. | Swiss-Prot: P17947NCBI Gene ID: 6688 |
| SDS-PAGE MW | 42kd |
| Concentration | 1.0mg/ml |
| Formulation | Rabbit IgG in phosphate buffered saline (without Mg ²⁺ and Ca ²⁺), pH 7.4, 150mM NaCl, 0.02% sodium azide and 50% glycerol. |
| Storage | Store at -20°C |

Application Details

Western blotting: 1:500~1:3000

Images



Western blot analysis of extracts from HepG2 and 293 cells, using SPI1 antibody #33699.

Background

Binds to the PU-box, a purine-rich DNA sequence (5'-GAGGAA-3') that can act as a lymphoid-specific enhancer. This protein is a transcriptional activator that may be specifically involved in the differentiation or activation of macrophages or B-cells. Also binds RNA and may modulate pre-mRNA splicing By similarity.

Ray D., Oncogene 5:663-668(1990).

Rao S., J. Biol. Chem. 274:11115-11124(1999).

Mao S., Mol. Cell. Biol. 19:3635-3644(1999).

Published Papers

el at., Knockdown of PU.1 AS lncRNA Inhibits Adipogenesis Through Enhancing PU.1 mRNA Translation.In J Cell Biochem on 2013 Nov by Wei-Jun Pang, Li-Gen Lin,et al..PMID:23749759, , (2013)

[PMID:23749759](#)

Note: This product is for in vitro research use only and is not intended for use in humans or animals.