

PTGR1 Antibody

Catalog No: #34841

Package Size: #34841-1 50ul #34841-2 100ul

Orders: order@signalwayantibody.comSupport: tech@signalwayantibody.com

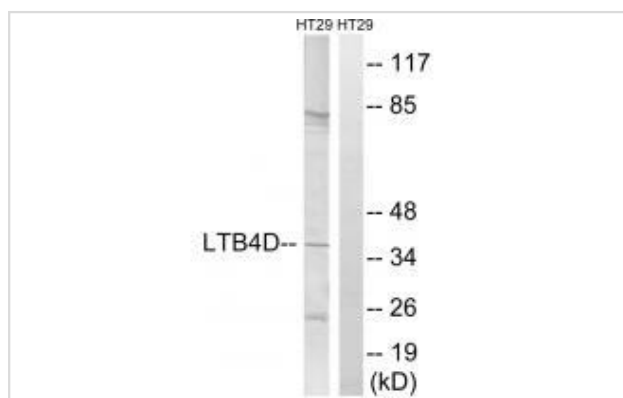
Description

Product Name	PTGR1 Antibody
Host Species	Rabbit
Clonality	Polyclonal
Purification	The antibody was affinity-purified from rabbit antiserum by affinity-chromatography using epitope-specific immunogen.
Applications	WB
Species Reactivity	Hu
Specificity	The antibody detects endogenous levels of total PTGR1 protein.
Immunogen Type	Peptide
Immunogen Description	Synthesized peptide derived from internal of human PTGR1.
Target Name	PTGR1
Other Names	Prostaglandin reductase 1; PRG-1; NADP-dependent leukotriene B4 12-hydroxydehydrogenase; EC=1.3.1.74; 15-oxoprostaglandin 13-reductase
Accession No.	Swiss-Prot: Q14914NCBI Gene ID: 22949
SDS-PAGE MW	36kd
Concentration	1.0mg/ml
Formulation	Rabbit IgG in phosphate buffered saline (without Mg ²⁺ and Ca ²⁺), pH 7.4, 150mM NaCl, 0.02% sodium azide and 50% glycerol.
Storage	Store at -20°C

Application Details

Western blotting: 1:500~1:3000

Images



Western blot analysis of extracts from HT-29 cells, using PTGR1 antibody #34841.

Background

Functions as 15-oxo-prostaglandin 13-reductase and acts on 15-oxo-PGE1, 15-oxo-PGE2 and 15-oxo-PGE2-alpha. Has no activity towards PGE1, PGE2 and PGE2-alpha By similarity. Catalyzes the conversion of leukotriene B4 into its biologically less active metabolite, 12-oxo-leukotriene B4. This is an initial and key step of metabolic inactivation of leukotriene B4.

Humphray S.J., Nature 429:369-374(2004).

The MGC Project Team; Genome Res. 14:2121-2127(2004).

Yokomizo T., J. Biol. Chem. 271:2844-2850(1996)

Note: This product is for in vitro research use only and is not intended for use in humans or animals.