

## SLC24A4 Antibody

Catalog No: #35062



Package Size: #35062-1 50ul #35062-2 100ul

Orders: [order@signalwayantibody.com](mailto:order@signalwayantibody.com)Support: [tech@signalwayantibody.com](mailto:tech@signalwayantibody.com)

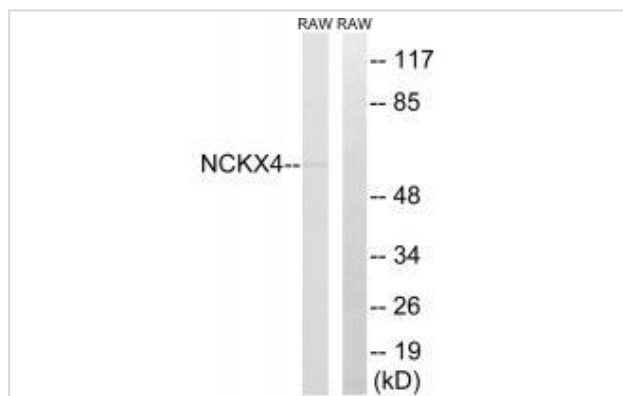
## Description

Product Name	SLC24A4 Antibody
Host Species	Rabbit
Clonality	Polyclonal
Purification	The antibody was affinity-purified from rabbit antiserum by affinity-chromatography using epitope-specific immunogen.
Applications	WB
Species Reactivity	Human;Mouse
Specificity	The antibody detects endogenous levels of total SLC24A4 protein.
Immunogen Type	Peptide
Immunogen Description	Synthesized peptide derived from internal of human SLC24A4.
Conjugates	Unconjugated
Target Name	SLC24A4
Other Names	Na(+)/K(+)/Ca(2+)-exchange protein 4; NCKX4; sodium/potassium/calcium exchanger 4; solute carrier family 24 (sodium/potassium/calcium exchanger); mem
Accession No.	Swiss-Prot: Q8NFF2NCBI Gene ID: 123041
SDS-PAGE MW	60kd
Concentration	1.0mg/ml
Formulation	Rabbit IgG in phosphate buffered saline (without Mg <sup>2+</sup> and Ca <sup>2+</sup> ), pH 7.4, 150mM NaCl, 0.02% sodium azide and 50% glycerol.
Storage	Store at -20°C

## Application Details

Western blotting: 1:500~1:3000

## Images



Western blot analysis of extracts from RAW264.7 cells, using SLC24A4 antibody #35062.



## Background

---

Transports 1 Ca<sup>2+</sup> and 1 K<sup>+</sup> in exchange for 4 Na<sup>+</sup>. Controls the rapid response termination and proper regulation of adaptation in olfactory sensory neurons (OSNs) which subsequently influences how odor information is encoded and perceived. May play a role in calcium transport during amelogenesis By similarity.

Li X.-F., J. Biol. Chem. 277:48410-48417(2002).

Ota T., Nat. Genet. 36:40-45(2004).

Sulem P., Nat. Genet. 39:1443-1452(2007).

---

Note: This product is for in vitro research use only and is not intended for use in humans or animals.