

SIRT3 Antibody

Catalog No: #35202



Package Size: #35202-1 50ul #35202-2 100ul

Orders: order@signalwayantibody.comSupport: tech@signalwayantibody.com

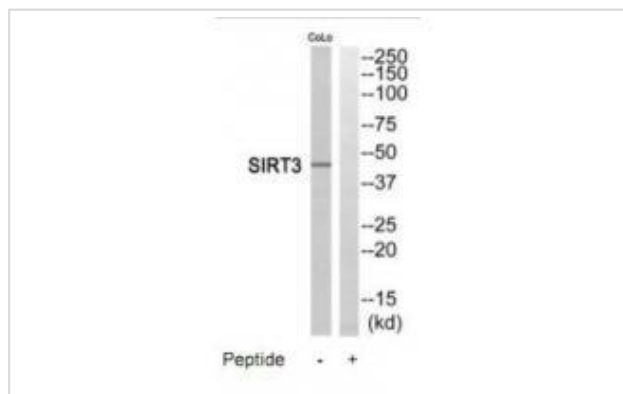
Description

Product Name	SIRT3 Antibody
Host Species	Rabbit
Clonality	Polyclonal
Purification	The antibody was affinity-purified from rabbit antiserum by affinity-chromatography using epitope-specific immunogen.
Applications	WB
Species Reactivity	Hu
Specificity	The antibody detects endogenous levels of total SIRT3 protein.
Immunogen Type	Peptide
Immunogen Description	Synthesized peptide derived from C-terminal of human SIRT3.
Target Name	SIRT3
Other Names	NAD-dependent deacetylase sirtuin-3; mitochondrial; SIR2-like protein 3; hSIRT3; SIRT3
Accession No.	Swiss-Prot: Q9NTG7NCBI Gene ID: 23410
SDS-PAGE MW	45kd
Concentration	1.0mg/ml
Formulation	Rabbit IgG in phosphate buffered saline (without Mg ²⁺ and Ca ²⁺), pH 7.4, 150mM NaCl, 0.02% sodium azide and 50% glycerol.
Storage	Store at -20°C

Application Details

Western blotting: 1:500~1:3000

Images



Western blot analysis of extracts from COLO205 cells, using SIRT3 antibody #35202.

Background

NAD-dependent protein deacetylase. Activates or deactivates mitochondrial target proteins by deacetylating key lysine residues. Known targets

include ACSS1, IDH, GDH, SOD2, PDHA1, LCAD, SDHA and the ATP synthase subunit ATP5O. Contributes to the regulation of the cellular energy metabolism. Important for regulating tissue-specific ATP levels.

Bechtel S., BMC Genomics 8:399-399(2007).

Schwer B., J. Cell Biol. 158:647-657(2002).

Onyango P., Proc. Natl. Acad. Sci. U.S.A. 99:13653-13658(2002).

Note: This product is for in vitro research use only and is not intended for use in humans or animals.