

## GPR91 Antibody

Catalog No: #35337



Package Size: #35337-1 50ul #35337-2 100ul

Orders: order@signalwayantibody.com

Support: tech@signalwayantibody.com

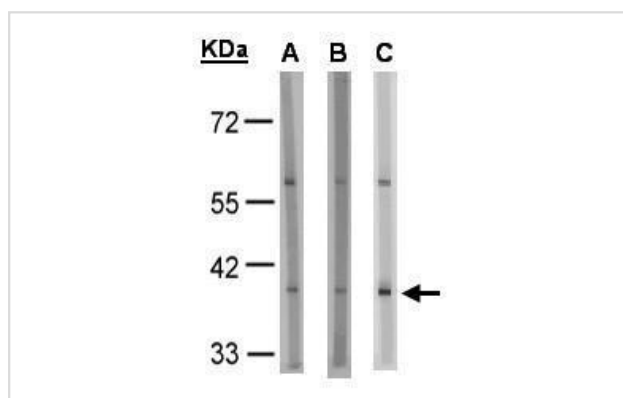
## Description

Product Name	GPR91 Antibody
Host Species	Rabbit
Clonality	Polyclonal
Purification	Affinity purified by Protein A.
Applications	WB
Species Reactivity	Hu
Specificity	The antibody detects endogenous levels of total GPR91 protein.
Immunogen Type	Peptide
Immunogen Description	Synthetic peptide corresponding to a region within amino acids 75 and 167 of GPR91.
Target Name	GPR91
Other Names	GPR91 antibody; SUCNR1 antibody; G-protein coupled receptor 91 antibody; G protein-coupled receptor 91 antibody; succinate receptor 1 antibody; P2Y purinoceptor 1 antibody
Accession No.	Swiss-Prot#:Q9BXA5;NCBI Gene#:56670
SDS-PAGE MW	39kd
Concentration	1mg/ml
Formulation	Rabbit IgG in 1XPBS, 1%BSA, 20% Glycerol (pH7). 0.01% Thimerosal was added as a preservative.
Storage	Store at -20°C

## Application Details

Western blotting: 1:500-1:3000

## Images



Sample(30 µg of whole cell lysate)

A:HeLa S3

B:MOLT4

C:Raji

10% SDS PAGE

#35337 diluted at 1:1000

## Background

This gene encodes a G-protein-coupled receptor for succinate, an intermediate molecule of the citric acid cycle. It is involved in the promotion of hematopoietic progenitor cell development, and it has a potential role in renovascular hypertension which has known correlations to renal failure,

---

Note: This product is for in vitro research use only and is not intended for use in humans or animals.