

## ACTIN Antibody

Catalog No: #35537

Package Size: #35537-1 50ul #35537-2 100ul

Orders: [order@signalwayantibody.com](mailto:order@signalwayantibody.com)Support: [tech@signalwayantibody.com](mailto:tech@signalwayantibody.com)

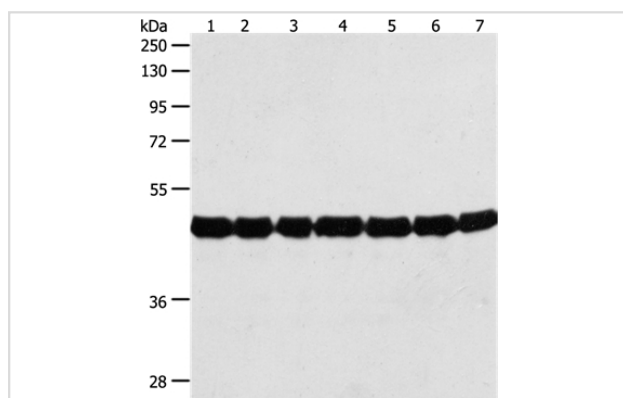
## Description

Product Name	ACTIN Antibody
Host Species	Rabbit
Clonality	Polyclonal
Purification	Antigen affinity purification.
Applications	WB,ELISA
Species Reactivity	Plant
Specificity	The antibody detects endogenous levels of total ACTIN protein.
Immunogen Type	Peptide
Immunogen Description	Synthetic peptide corresponding to residues near the N terminal of Arabidopsis thaliana actin
Conjugates	Unconjugated
Target Name	ACTIN
Other Names	ACTB
Accession No.	Swiss-Prot#: P53497NCBI Gene ID: 823805Gene Accssion: NP_190236.1
SDS-PAGE MW	42kd
Concentration	0.8 mg/ml
Formulation	Rabbit IgG in pH7.3 PBS, 0.05% NaN <sub>3</sub> , 50% Glycerol.
Storage	Store at -20°C

## Application Details

Western blotting: 1:500-1:2000

## Images



Gel: 10%SDS-PAGE

Lysates (from left to right): Cinnamomum camphora leaves,  
Nicotiana tabacum leaves, Triticum aestivum leaves,  
Arabidopsis thaliana leaves, Brassica campestris flowers,  
Brassica campestris leaves, Vicia Faba leaves

Amount of lysate: 50ug per lane

Primary antibody: 1/500 dilution

Secondary antibody dilution: 1/8000

Exposure time: 20 seconds

## Background

Member of actin subclass composed of ACT12 and ACT4. RNA is expressed at very low levels in vegetative organs, low levels in flowers and very high levels in pollen. Expression of an ACT12/GUS fusion was found in vascular tissues, tapetum, developing and mature pollen, the root cap and in a

ring of pericycle tissues during lateral root initiation and early development.

---

Note: This product is for in vitro research use only and is not intended for use in humans or animals.