

TPH1 Antibody

Catalog No: #35965

Package Size: #35965-1 50ul #35965-2 100ul

Orders: order@signalwayantibody.comSupport: tech@signalwayantibody.com

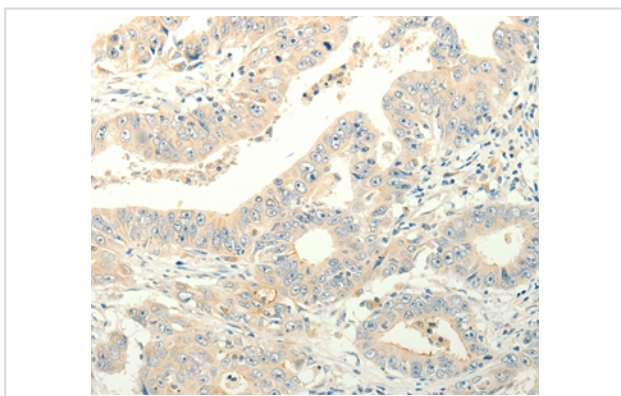
Description

Product Name	TPH1 Antibody
Host Species	Rabbit
Clonality	Polyclonal
Purification	Antigen affinity purification.
Applications	IHC
Species Reactivity	Hu
Specificity	The antibody detects endogenous levels of total TPH1 protein.
Immunogen Type	Recombinant Protein
Immunogen Description	Fusion protein corresponding to residues near the C terminal of human tryptophan hydroxylase 1
Target Name	TPH1
Other Names	TPRH; TRPH
Accession No.	Swiss-Prot#: P17752NCBI Gene ID: 7166Gene Accssion: BC106739
Concentration	0.7mg/ml
Formulation	Rabbit IgG in pH7.3 PBS, 0.05% NaN ₃ , 50% Glycerol.
Storage	Store at -20°C

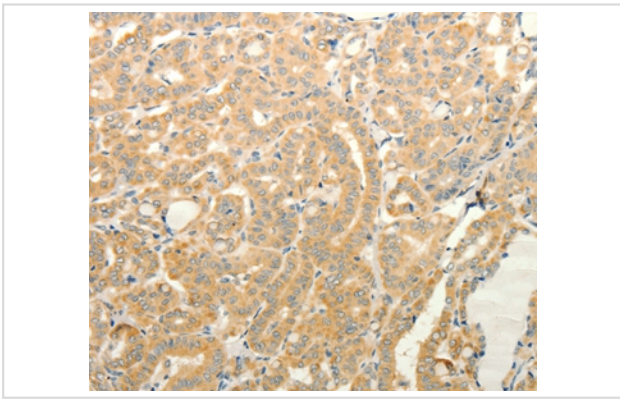
Application Details

Immunohistochemistry: 1:15-1:50

Images



Immunohistochemical analysis of paraffin-embedded Human thyroid cancer tissue using #35965 at dilution 1/20.



Immunohistochemical analysis of paraffin-embedded Human gastric cancer tissue using #35965 at dilution 1/20.

Background

This gene encodes a member of the aromatic amino acid hydroxylase family. The encoded protein catalyzes the first and rate limiting step in the biosynthesis of serotonin, an important hormone and neurotransmitter. Mutations in this gene have been associated with an elevated risk for a variety of diseases and disorders, including schizophrenia, somatic anxiety, anger-related traits, bipolar disorder, suicidal behavior, addictions, and others.

Note: This product is for in vitro research use only and is not intended for use in humans or animals.