

ACTL8 Antibody

Catalog No: #36030

Package Size: #36030-1 50ul #36030-2 100ul

Orders: order@signalwayantibody.comSupport: tech@signalwayantibody.com

Description

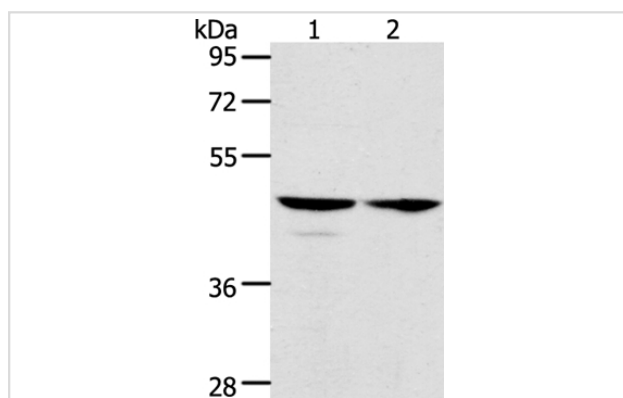
Product Name	ACTL8 Antibody
Host Species	Rabbit
Clonality	Polyclonal
Purification	Antigen affinity purification.
Applications	WB IHC
Species Reactivity	Hu
Specificity	The antibody detects endogenous levels of total ACTL8 protein.
Immunogen Type	Recombinant Protein
Immunogen Description	Fusion protein corresponding to residues near the C terminal of human Actin-like 8
Target Name	ACTL8
Other Names	CT57
Accession No.	Swiss-Prot#: Q9H568NCBI Gene ID: 81569Gene Accssion: BC028909
SDS-PAGE MW	41kd
Concentration	0.7mg/ml
Formulation	Rabbit IgG in pH7.3 PBS, 0.05% NaN ₃ , 50% Glycerol.
Storage	Store at -20°C

Application Details

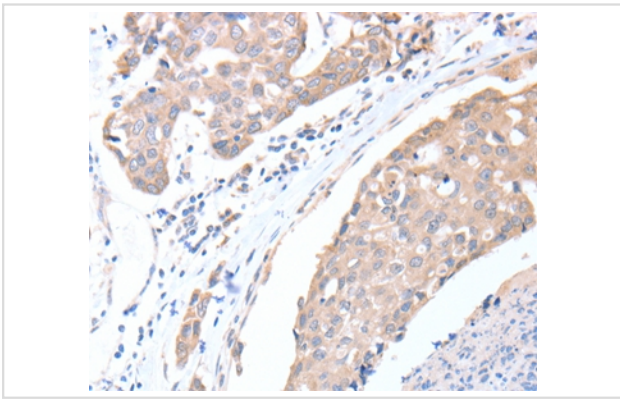
Western blotting: 1:500-1:2000

Immunohistochemistry: 1:15-1:50

Images



Gel: 10%SDS-PAGE
 Lysates (from left to right): Hela and A549 cell
 Amount of lysate: 40ug per lane
 Primary antibody: 1/350 dilution
 Secondary antibody dilution: 1/8000
 Exposure time: 5 seconds



Immunohistochemical analysis of paraffin-embedded Human breast cancer tissue using #36030 at dilution 1/15.

Background

This protein belongs to the actin family. Actin-like 8 is a protein in humans that is encoded by the ACTL8 gene. The high levels of expression in testis and pancreas and weak expression in placenta. The subcellular location of this protein is cytoplasm, cytoskeleton.

Published Papers

et al., Upregulated expression of ACTL8 contributes to Invasion and metastasis and indicates poor prognosis In colorectal cancer. In Onco Targets Ther on 2019 Mar 1 by Han Q, Sun ML, et al.. PMID: 30881029, (2019)

[PMID:30881029](#)

Note: This product is for in vitro research use only and is not intended for use in humans or animals.